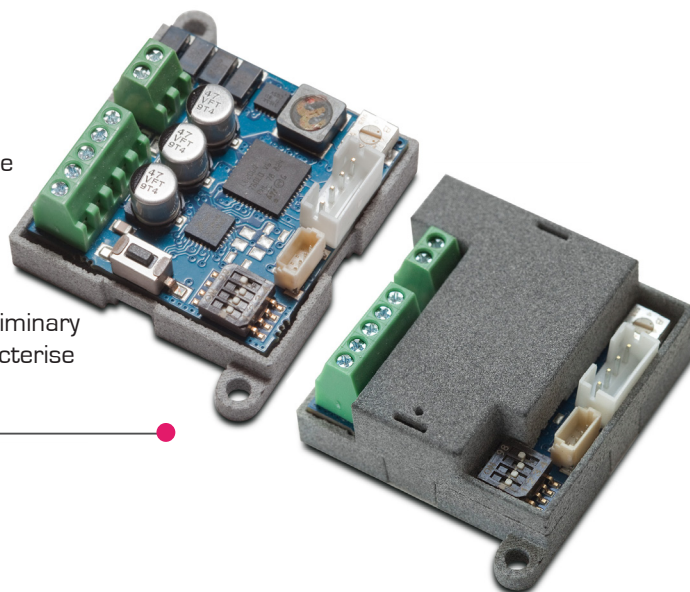




STEPPER GEARMOTOR DRIVER

GM-STEP-DRIVER-1

The step-motor is a synchronous electric motor with pulsed direct current and brushless electronic control which can divide its rotation into a large number of steps. Unlike brush DC motors, the position of the motor can be accurately controlled without an encoder (feedback). It is extremely important to choose the correct size and type of motor to suit the application. The use of a step-motor requires a careful preliminary analysis of the operating conditions in order to correctly characterise the system.



TECHNICAL FEATURES:

Power supply: from 12 to 30Vdc - from 12 to 24Vac

Setting current: 160mA or 330mA

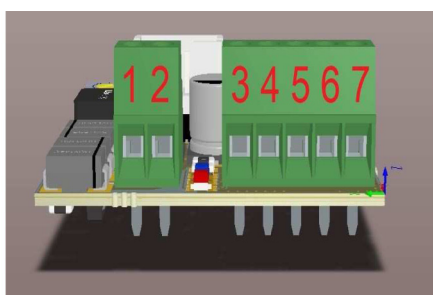
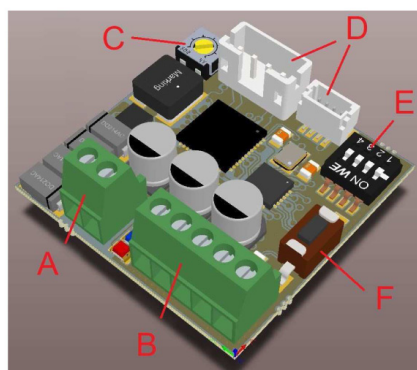
Operating mode: as a step-motor (STEP/DIR) or as a brush motor simulation

Dimensions: 33 x 33 x 14 mm

Weight: approx. 10g

OVERVIEW:

- A = Power input terminal
- B = Control signal input terminal
- C = Speed/acceleration trimmer
- D = Motor connection
- E = DIP switch program configuration
- F = Service button



CONNECTIONS:

- 1-2 = Power input +/-, for more details see "programs" section
- 3 = Step pulse input (5-30V, ref. program 3)
- 4 = Input for CW/CCW rotation (connect to GND to change the rotation direction, ref. Programs 3,4,5 and 6)
- 5 = Speed control by voltage input (1-5V or 2-10V program ref. 4 and 5)
- 6 = Speed control by current input (4-20mA ref. Program 6)
- 7 = GND reference point of the signals described above



SELECTABLE PROGRAMS

PROG. 1	BRUSH MOTOR SIMULATION WITH DC DRIVER INPUT, CW/CCW ROTATION ACCORDING TO POWER SUPPLY POLARITY.
PROG. 2	BRUSH MOTOR SIMULATION WITH AC/DC DRIVER INPUT AND FIXED CW/CCW ROTATION.
PROG. 3	STEPPER WITH AC/DC DRIVER INPUT AND STEP/DIR CONTROL.
PROG. 4	BRUSH MOTOR SIMULATION WITH AC/DC DRIVER INPUT WITH SPEED (5V) AND ACCELERATION/DECELERATION CONTROL.
PROG. 5	BRUSH MOTOR SIMULATION WITH AC/DC DRIVER INPUT WITH SPEED (10V) AND ACCELERATION/DECELERATION CONTROL.
PROG. 6	BRUSH MOTOR SIMULATION WITH AC/DC DRIVER INPUT WITH SPEED (4-20mA) AND ACCELERATION/DECELERATION CONTROL.
PROG. 7	MAXIMUM CURRENT SETTING 160 or 330mA.



PROGRAM SELECTION (DIP switch "E")

PROG. 1

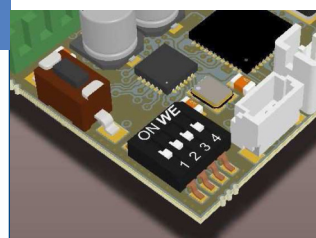
BRUSH MOTOR SIMULATION WITH DC DRIVER INPUT, CW/CCW ROTATION ACCORDING TO POWER SUPPLY POLARITY

DIP switch: 1 = OFF 2 = OFF 3 = OFF 4 = (see program 7)

In this configuration the motor acts like a brush motor whose CW/CCW rotation depends on the power supply polarity applied to terminals 1 and 2.

Trimmer "C" sets the speed.

Motor torque varies according to supply voltage and speed.



PROG. 2

BRUSH MOTOR SIMULATION WITH AC/DC DRIVER INPUT AND FIXED CW/CCW ROTATION

DIP switch: 1 = ON 2 = OFF 3 = OFF 4 = (see program 7)

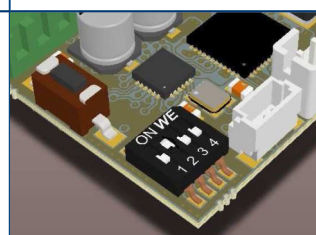
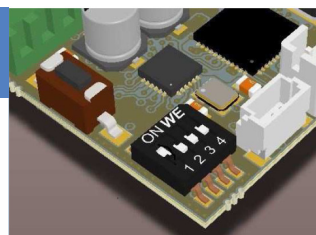
In this configuration the motor acts like a brush motor whose CW/CCW rotation is not determined by the power supply polarity, but by the position of the dipswitches 1 and 2.

Trimmer "C" sets the speed.

The driver can be powered in either AC or DC mode (terminals 1 and 2).

DIP switch: 1 = OFF 2 = ON 3 = OFF 4 = (see program 7)

As the previous configuration but with the opposite direction of rotation.



PROG. 3

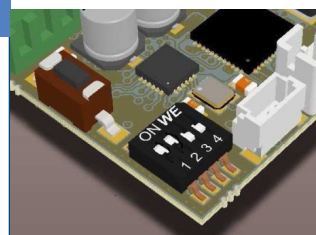
STEPPER WITH AC/DC DRIVER INPUT AND STEP/DIR CONTROL

DIP switch: 1 = ON 2 = ON 3 = OFF 4 = (see program 7)

In this configuration the motor acts like a step-motor.

The driver can be powered either in AC or DC mode (terminals 1 and 2).

A square wave signal must be applied to terminal 3 which determines the speed of the motor (from 5 to 30V), while terminal 4 determines the CW/CCW rotation (connect or disconnect to GND to reverse rotation).





PROGRAM SELECTION (DIP switch "E")

PROG. 4

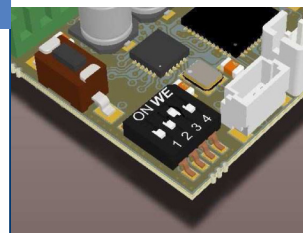
BRUSH MOTOR SIMULATION WITH AC/DC DRIVER INPUT WITH SPEED (5V) AND ACCELERATION/DECELERATION CONTROL

DIP switch: 1 = OFF 2 = OFF 3 = ON 4 = (see program 7)

In this configuration the motor acts like a brush motor whose speed is determined by the voltage supplied on terminal 5 (from 1 to 5V), while terminal 4 determines the CW/CCW rotation (connect or disconnect to GND to reverse direction).

The drive can be powered either in AC or DC mode (terminals 1 and 2).

Trimmer "C" sets the acceleration and deceleration.



PROG. 5

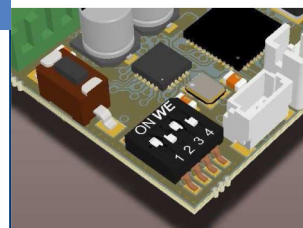
BRUSH MOTOR SIMULATION WITH AC/DC DRIVER INPUT WITH SPEED (10V) AND ACCELERATION/DECELERATION CONTROL

DIP switch: 1 = ON 2 = OFF 3 = ON 4 = (see program 7)

In this configuration the motor acts like a brush motor whose speed is determined by the voltage supplied on terminal 5 (from 2 to 10V), while terminal 4 determines the CW/CCW rotation (connect or disconnect to GND to reverse direction).

The driver can be powered either in AC or DC mode (terminals 1 and 2).

Trimmer "C" sets the acceleration and deceleration.



PROG. 6

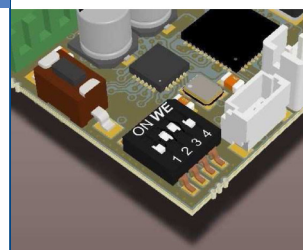
BRUSH MOTOR SIMULATION WITH AC/DC DRIVER INPUT WITH SPEED (4-20mA) AND ACCELERATION/DECELERATION CONTROL

DIP switch: 1 = OFF 2 = ON 3 = ON 4 = (see program 7)

In this configuration the motor acts like a brush motor whose speed is determined by the current supplied on terminal 6 (from 4 to 20mA), while terminal 4 determines the CW/CCW rotation (connect or disconnect to GND to reverse direction).

The driver can be powered either in AC or DC mode (terminals 1 and 2).

Trimmer "C" sets the acceleration and deceleration.



PROG. 7

MAXIMUM CURRENT SETTING 160 or 330mA

The maximum motor current is set with dip switch 4.

DIP switch: 1 = (x) 2 = (x) 3 = (x) 4 = OFF

The maximum motor current is set at 330mA.

DIP switch: 1 = (x) 2 = (x) 3 = (x) 4 = ON

The maximum motor current is set at 160mA.

