



- ▶ Tubular probe temperature sensor
- ▶ Temperature range -50 to +150° C
- ▶ Miniature design with 3 mm outer diameter
- ▶ PT100 and PT1000 available
- ▶ Different length options available
- ▶ Custom designs available

Applications

Heating/Cooling systems
HVAC

Energy
Industrial process

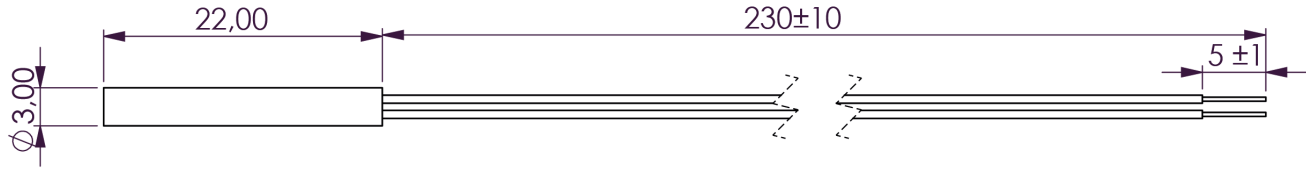
Laboratory
Medical Devices

Features

The LTP-TP2 tubular temperature probe is a 3 mm outer diameter stainless steel temperature probe which is available in multiple length options. The small diameter provides excellent response times whilst the use of the LTS1 PT100 and PT1000 Elements provides excellent performance characteristics combined with a cost-effective design. Those characteristics make the LTP-TP2 tubular temperature probe a great choice for medical or laboratory type equipment or other applications that require a good response time performance and high accuracy and stability.

Specification	DIN EN 60751 (according to IEC 751)		
Temperature range	-50 °C to +150 °C		
Nominal resistance	100 Ω at 0 °C 1000 Ω at 0 °C		
Long-term stability	< 0.04% at 1000 h at 130 °C		
Tolerance class	Class A IEC 60751 F0.15 Class B IEC 60751 F0.30	± deviations in °C 0.15 + 0.002 x T 0.30 + 0.005 x T	Temperature range of validity in °C -30 to +150 -50 to +150
Response time in still liquid	t ₉₀ < 12 s t ₆₅ < 5 s		
Temperature coefficient	3850 ppm/K		
Insulation resistance	> 5 MΩ at 750 VDC		
Recommended applied current (self heating must be considered)	1 mA at 100 Ω 0.3 mA at 1000 Ω		
Materials			
Leads and insulation	AWG28 silver-plated copper wire with white PTFE insulation		
Probe material	316 Stainless Steel		

Dimensions in mm



Ordering information

(Please use the characters in the chart below to construct your product code)

Example Code 810xxx - LTP - TP2 - SS - 22x3 - 23 - PT1000A

Probe Size

22x3 22 mm x 3 mm OD

Thermistor Type

PT100B PT100 class B

PT1000A PT1000 class A

Probe cable length in mm

5 50

10 100

15 150

20 200

23 230 (Standard)

25 250

30 300

35 350

40 400

45 450

100 1000

x Custom length

Standard model number

810117-LTP-TP2-22-3-23-PT100B

810116-LTP-TP2-22-3-23-PT1000A

If you require a customized solution for your program contact our sales team.