



Shown: K1109 with mock graphics

Take advantage of CPI's waterproof switches mounted in easy-to-install panels. Switches can be wired in series, parallel, or left as individual circuits. Panel assemblies can be terminated with a wide variety of industry standard connectors.

Use one of our standard configurations shown here, or contact us to discuss a design made to fit your application.

The Basic Switch

The internal switching mechanism for these switches is a snap-action copper sine blade spring with a riveted contact. The standard contact material is silver alloy with gold alloy and gold plated silver contacts available upon request.

Electrical rating: (28VDC/120VAC): 5 amps resistive, 3 amps inductive. Higher ratings available on special order. UL recognized for 120VAC/5 amp resistive rating upon request.

Endurance: 100,000 to 1 million cycles (depending on configuration) Operating temperature range: -50°F to 221°F, depending on configuration.

Environmental resistance: Excellent resistance to both high and low temperatures, acids, alkalis, salt spray, sand, dust and fungus.

Color: Black is standard. Other colors available on special order.

Jacket material: Thermoplastic rubber

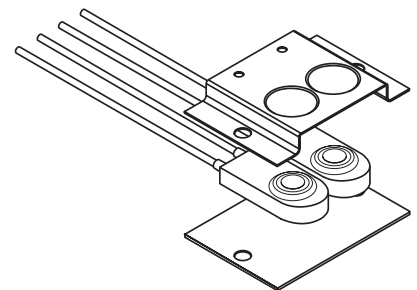


Applications

- ▶ Lift gates
- ▶ Truck APU
- ▶ Driver notification (fire trucks)
- ▶ Outrigger control
- ▶ Hitch control
- ▶ Remote RPM control (refuse trucks, fire trucks)
- ▶ Trim tabs (marine)
- ▶ Cart tripper (refuse trucks)

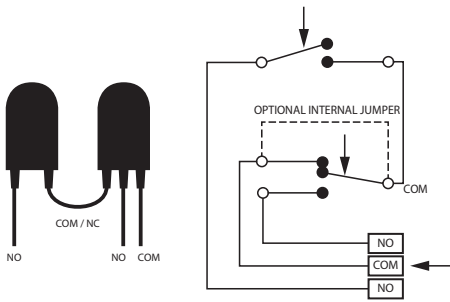
All panels are welded assemblies using heavy-gauge 304 stainless steel.

Combined with our proven B9000 Series basic switches, CPI's Waterproof Switch Panels provide a rugged and reliable control solution for harsh environments on construction, agricultural, over-the-road, and stationary industrial equipment.

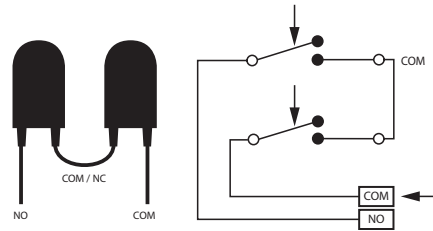




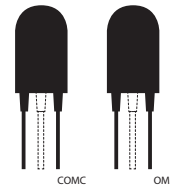
Available Circuits



Special circuits



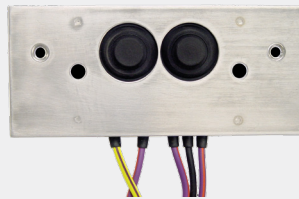
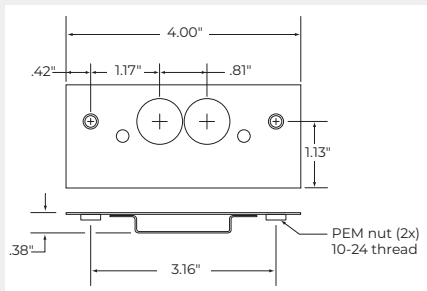
Switches in series



Separate switches: SPDT, NO, or NC combinations

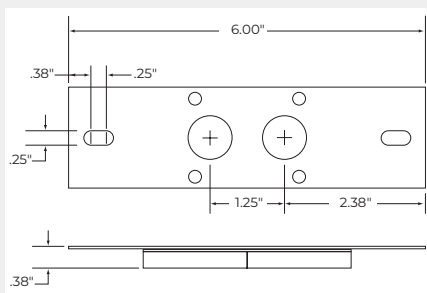
Contact us to discuss your special circuit requirements.

THE FAMILY OF PANEL BRACKETS



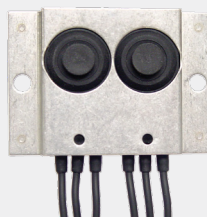
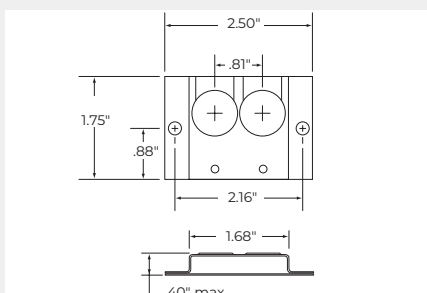
E1333

- ▶ close button orientation
- ▶ integral PEM nut for easy installation



K1109

- ▶ wide button orientation
- ▶ slotted mounting holes
- ▶ large area for added graphics

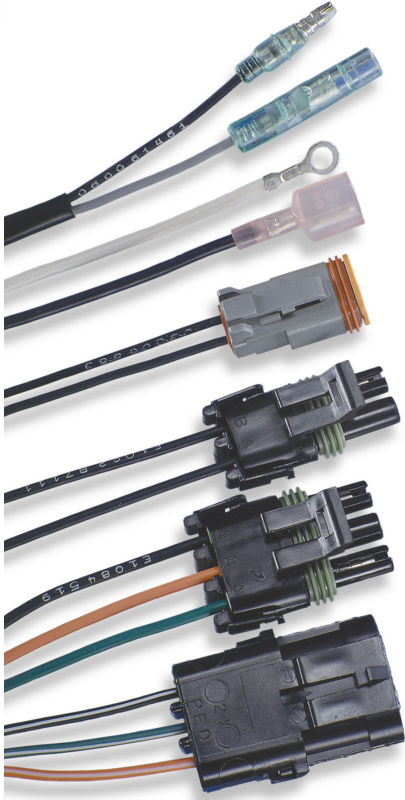


K1058

- ▶ flush mount or surface mount
- ▶ compact design



Terminations



Along with CPI's standard offering of standard wire and cable leads, we also have available special terminations to meet your specifications. Variations include special color-coded wire, BUNA-N, coil cords, and alternative wire gauges. Connectors, wire markers, and sleeving may also be specified, creating a complete switch/harness assembly.

The main advantage is that you will receive a complete assembly from CPI rather than a third-party harness house. In addition, you will receive the highest quality possible, as CPI is your most qualified source when it comes to integrating terminations with our sealed switches.

Button Heights

Our switches are available in low, medium, and high button configurations as shown below.

