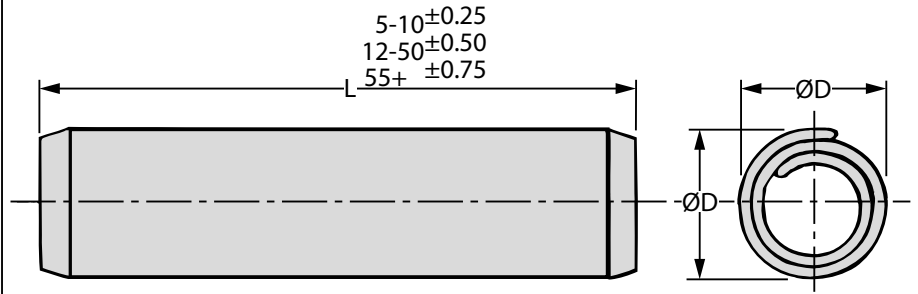


SEP

MECHANICAL

Coiled Spring Pins

Spring Steel, ISO 8750 : 1.5 - 5mm Dia.



Part Number	Diameter (ØD)			L	To Fit Hole		Double Shear Strength kN	Part Number	Diameter (ØD)			L	To Fit Hole		Double Shear Strength kN
	Nom.	Min.	Max.		Min.	Max.			Nom.	Min.	Max.		Min.	Max.	
SEP1.5-5	1.5	1.62	1.73	5	1.50	1.60	1.45	SEP3-28	3.0	3.15	3.30	28	2.99	3.10	5.5
SEP1.5-6	1.5	1.62	1.73	6	1.50	1.60	1.45	SEP3-30	3.0	3.15	3.30	30	2.99	3.10	5.5
SEP1.5-8	1.5	1.62	1.73	8	1.50	1.60	1.45	SEP3-35	3.0	3.15	3.30	35	2.99	3.10	5.5
SEP1.5-10	1.5	1.62	1.73	10	1.50	1.60	1.45	SEP3-40	3.0	3.15	3.30	40	2.99	3.10	5.5
SEP1.5-12	1.5	1.62	1.73	12	1.50	1.60	1.45	SEP3.5-12	3.5	3.64	3.79	12	3.48	3.62	5.5
SEP1.5-14	1.5	1.62	1.73	14	1.50	1.60	1.45	SEP3.5-14	3.5	3.64	3.79	14	3.48	3.62	5.5
SEP1.5-16	1.5	1.62	1.73	16	1.50	1.60	1.45	SEP3.5-16	3.5	3.64	3.79	16	3.48	3.62	5.5
SEP2-6	2.0	2.13	2.25	6	1.99	2.10	2.50	SEP3.5-18	3.5	3.64	3.79	18	3.48	3.62	5.5
SEP2-8	2.0	2.13	2.25	8	1.99	2.10	2.50	SEP3.5-20	3.5	3.64	3.79	20	3.48	3.62	5.5
SEP2-10	2.0	2.13	2.25	10	1.99	2.10	2.50	SEP3.5-22	3.5	3.64	3.79	22	3.48	3.62	5.5
SEP2-12	2.0	2.13	2.25	12	1.99	2.10	2.50	SEP3.5-24	3.5	3.64	3.79	24	3.48	3.62	5.5
SEP2-14	2.0	2.13	2.25	14	1.99	2.10	2.50	SEP3.5-26	3.5	3.64	3.79	26	3.48	3.62	5.5
SEP2-16	2.0	2.13	2.25	16	1.99	2.10	2.50	SEP3.5-28	3.5	3.64	3.79	28	3.48	3.62	5.5
SEP2-18	2.0	2.13	2.25	18	1.99	2.10	2.50	SEP3.5-30	3.5	3.64	3.79	30	3.48	3.62	5.5
SEP2-20	2.0	2.13	2.25	20	1.99	2.10	2.50	SEP3.5-35	3.5	3.64	3.79	35	3.48	3.62	5.5
SEP2-35	2.0	2.13	2.25	35	1.99	2.10	2.50	SEP4-10	4.0	4.20	4.40	10	3.98	4.12	9.6
SEP2.5-8	2.5	2.62	2.79	8	2.49	2.60	3.90	SEP4-12	4.0	4.20	4.40	12	3.98	4.12	9.6
SEP2.5-10	2.5	2.62	2.79	10	2.49	2.60	3.90	SEP4-14	4.0	4.20	4.40	14	3.98	4.12	9.6
SEP2.5-12	2.5	2.62	2.79	12	2.49	2.60	3.90	SEP4-16	4.0	4.20	4.40	16	3.98	4.12	9.6
SEP2.5-14	2.5	2.62	2.79	14	2.49	2.60	3.90	SEP4-18	4.0	4.20	4.40	18	3.98	4.12	9.6
SEP2.5-16	2.5	2.62	2.79	16	2.49	2.60	3.90	SEP4-20	4.0	4.20	4.40	20	3.98	4.12	9.6
SEP2.5-18	2.5	2.62	2.79	18	2.49	2.60	3.90	SEP4-22	4.0	4.20	4.40	22	3.98	4.12	9.6
SEP2.5-20	2.5	2.62	2.79	20	2.49	2.60	3.90	SEP4-24	4.0	4.20	4.40	24	3.98	4.12	9.6
SEP2.5-22	2.5	2.62	2.79	22	2.49	2.60	3.90	SEP4-26	4.0	4.20	4.40	26	3.98	4.12	9.6
SEP2.5-24	2.5	2.62	2.79	24	2.49	2.60	3.90	SEP4-28	4.0	4.20	4.40	28	3.98	4.12	9.6
SEP3-10	3.0	3.15	3.30	10	2.99	3.10	5.50	SEP4-30	4.0	4.20	4.40	30	3.98	4.12	9.6
SEP3-12	3.0	3.15	3.30	12	2.99	3.10	5.50	SEP4-35	4.0	4.20	4.40	35	3.98	4.12	9.6
SEP3-14	3.0	3.15	3.30	14	2.99	3.10	5.50	SEP4-40	4.0	4.20	4.40	40	3.98	4.12	9.6
SEP3-16	3.0	3.15	3.30	16	2.99	3.10	5.50	SEP4-45	4.0	4.20	4.40	45	3.98	4.12	9.6
SEP3-18	3.0	3.15	3.30	18	2.99	3.10	5.50	SEP5-14	5.0	5.25	5.50	14	4.95	5.12	15.0
SEP3-20	3.0	3.15	3.30	20	2.99	3.10	5.50	SEP5-16	5.0	5.25	5.50	16	4.95	5.12	15.0
SEP3-22	3.0	3.15	3.30	22	2.99	3.10	5.50	SEP5-18	5.0	5.25	5.50	18	4.95	5.12	15.0
SEP3-24	3.0	3.15	3.30	24	2.99	3.10	5.50	SEP5-20	5.0	5.25	5.50	20	4.95	5.12	15.0
SEP3-26	3.0	3.15	3.30	26	2.99	3.10	5.50	SEP5-22	5.0	5.25	5.50	22	4.95	5.12	15.0

Material

Spring Steel (CS67 DIN 17222), hardened and tempered to HV 420-520.

Other sizes (0.8 to 16mm diameters) and lengths plus Inch sizes available, P.O.A. ISO 8748 (heavy duty) and ISO 8751 (light duty) available for 1.5 to 8mm diameters, P.O.A.

Minimum Double Shear Strength: Tested to ISO 8749.

Finishes

Coiled pins are normally supplied with a plain oiled finish.

Steel pins may be given a protective finish such as zinc, phosphate, etc but for electrolytically applied finishes it is essential to de-embrittle the pins immediately after plating.

Since the de-embrittlement process is not completely reliable, non-electrolytic finishes or stainless should be used for safety-critical applications.

Where pins are to be used in plastic assemblies, it is recommended that they are de-oiled before use to avoid embrittlement of the plastic.

Features

Coiled spring pins consist of 2¼ coils and have swaged chamfers at each end. They are designed for plain drilled holes, but countersinking makes insertion easier.

The coiled design improves shock absorption as the load is spread over more than one coil.

Assembly is easier as the insertion force needed is lower.

The pins cannot interlock when in bulk, which is a benefit when they are to be barrel plated or installed using bowl-fed equipment.



+44 (0)1246 455500



+44 (0)1246 455522

ondrives



sales@ondrives.com



www.ondrives.com

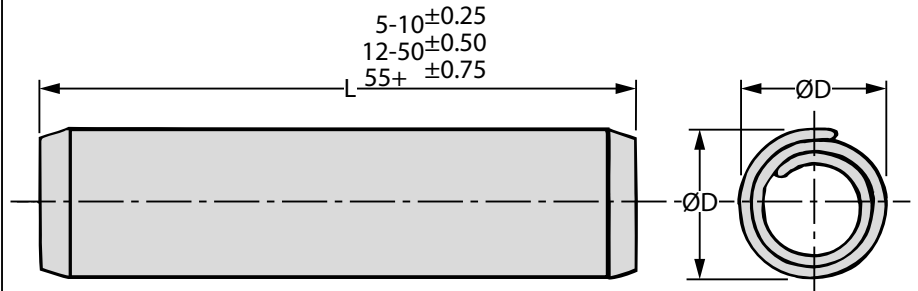
Product information updated August 2017 and subject to change. Please click the product links for prices and availability.

SEP

MECHANICAL

Coiled Spring Pins

Spring Steel, ISO 8750 : 5 - 12mm Dia.



Part Number	Diameter (ØD)			L	To Fit Hole		Double Shear Strength kN	Part Number	Diameter (ØD)			L	To Fit Hole		Double Shear Strength kN
	Nom.	Min.	Max.		Min.	Max.			Nom.	Min.	Max.		Min.	Max.	
SEP5-24	5	5.25	5.50	24	4.95	5.12	15	SEP8-60	8	8.30	8.63	60	7.93	8.17	39
SEP5-26	5	5.25	5.50	26	4.95	5.12	15	SEP8-65	8	8.30	8.63	65	7.93	8.17	39
SEP5-28	5	5.25	5.50	28	4.95	5.12	15	SEP8-70	8	8.30	8.63	70	7.93	8.17	39
SEP5-30	5	5.25	5.50	30	4.95	5.12	15	SEP10-24	10	10.30	10.65	24	9.93	10.20	62
SEP5-35	5	5.25	5.50	35	4.95	5.12	15	SEP10-26	10	10.30	10.65	26	9.93	10.20	62
SEP5-40	5	5.25	5.50	40	4.95	5.12	15	SEP10-28	10	10.30	10.65	28	9.93	10.20	62
SEP5-45	5	5.25	5.50	45	4.95	5.12	15	SEP10-30	10	10.30	10.65	30	9.93	10.20	62
SEP5-50	5	5.25	5.50	50	4.95	5.12	15	SEP10-35	10	10.30	10.65	35	9.93	10.20	62
SEP6-16	6	6.25	6.50	16	5.95	6.13	22	SEP10-40	10	10.30	10.65	40	9.93	10.20	62
SEP6-18	6	6.25	6.50	18	5.95	6.13	22	SEP10-45	10	10.30	10.65	45	9.93	10.20	62
SEP6-20	6	6.25	6.50	20	5.95	6.13	22	SEP10-50	10	10.30	10.65	50	9.93	10.20	62
SEP6-22	6	6.25	6.50	22	5.95	6.13	22	SEP10-55	10	10.30	10.65	55	9.93	10.20	62
SEP6-24	6	6.25	6.50	24	5.95	6.13	22	SEP10-60	10	10.30	10.65	60	9.93	10.20	62
SEP6-26	6	6.25	6.50	26	5.95	6.13	22	SEP10-65	10	10.30	10.65	65	9.93	10.20	62
SEP6-28	6	6.25	6.50	28	5.95	6.13	22	SEP10-70	10	10.30	10.65	70	9.93	10.20	62
SEP6-30	6	6.25	6.50	30	5.95	6.13	22	SEP10-75	10	10.30	10.65	75	9.93	10.20	62
SEP6-35	6	6.25	6.50	35	5.95	6.13	22	SEP10-80	10	10.30	10.65	80	9.93	10.20	62
SEP6-40	6	6.25	6.50	40	5.95	6.13	22	SEP10-85	10	10.30	10.65	85	9.93	10.20	62
SEP6-45	6	6.25	6.50	45	5.95	6.13	22	SEP12-30	12	12.35	12.75	30	11.90	12.22	89
SEP6-50	6	6.25	6.50	50	5.95	6.13	22	SEP12-35	12	12.35	12.75	35	11.90	12.22	89
SEP6-55	6	6.25	6.50	55	5.95	6.13	22	SEP12-40	12	12.35	12.75	40	11.90	12.22	89
SEP6-60	6	6.25	6.50	60	5.95	6.13	22	SEP12-45	12	12.35	12.75	45	11.90	12.22	89
SEP8-16	8	8.30	8.63	16	7.93	8.17	39	SEP12-50	12	12.35	12.75	50	11.90	12.22	89
SEP8-20	8	8.30	8.63	20	7.93	8.17	39	SEP12-55	12	12.35	12.75	55	11.90	12.22	89
SEP8-22	8	8.30	8.63	22	7.93	8.17	39	SEP12-60	12	12.35	12.75	60	11.90	12.22	89
SEP8-24	8	8.30	8.63	24	7.93	8.17	39	SEP12-65	12	12.35	12.75	65	11.90	12.22	89
SEP8-26	8	8.30	8.63	26	7.93	8.17	39	SEP12-70	12	12.35	12.75	70	11.90	12.22	89
SEP8-28	8	8.30	8.63	28	7.93	8.17	39	SEP12-75	12	12.35	12.75	75	11.90	12.22	89
SEP8-30	8	8.30	8.63	30	7.93	8.17	39	SEP12-80	12	12.35	12.75	80	11.90	12.22	89
SEP8-35	8	8.30	8.63	35	7.93	8.17	39	SEP12-85	12	12.35	12.75	85	11.90	12.22	89
SEP8-40	8	8.30	8.63	40	7.93	8.17	39	SEP12-90	12	12.35	12.75	90	11.90	12.22	89
SEP8-45	8	8.30	8.63	45	7.93	8.17	39	SEP12-95	12	12.35	12.75	95	11.90	12.22	89
SEP8-50	8	8.30	8.63	50	7.93	8.17	39	SEP12-100	12	12.35	12.75	100	11.90	12.22	89
SEP8-55	8	8.30	8.63	55	7.93	8.17	39								

Material

Spring Steel (CS67 DIN 17222), hardened and tempered to HV 420-520.

Other sizes (0.8 to 16mm diameters) and lengths plus Inch sizes available, P.O.A. ISO 8748 (heavy duty) and ISO 8751 (light duty) available for 1.5 to 8mm diameters, P.O.A.

Minimum Double Shear Strength: Tested to ISO 8749.

Finishes

Coiled pins are normally supplied with a plain oiled finish.

Steel pins may be given a protective finish such as zinc, phosphate, etc but for electrolytically applied finishes it is essential to de-embrittle the pins immediately after plating.

Since the de-embrittlement process is not completely reliable, non-electrolytic finishes or stainless should be used for safety-critical applications.

Where pins are to be used in plastic assemblies, it is recommended that they are de-oiled before use to avoid embrittlement of the plastic.

Features

Coiled spring pins consist of 2¼ coils and have swaged chamfers at each end. They are designed for plain drilled holes, but countersinking makes insertion easier.

The coiled design improves shock absorption as the load is spread over more than one coil.

Assembly is easier as the insertion force needed is lower.

The pins cannot interlock when in bulk, which is a benefit when they are to be barrel plated or installed using bowl-fed equipment.



+44 (0)1246 455500



+44 (0)1246 455522

ondrives



sales@ondrives.com



www.ondrives.com

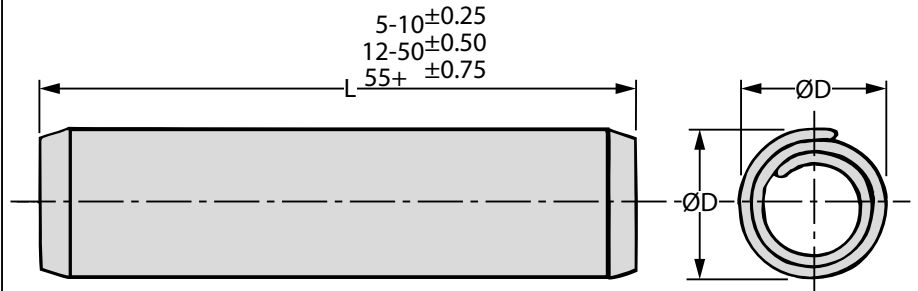
Product information updated August 2017 and subject to change. Please click the product links for prices and availability.

EP

MECHANICAL

Coiled Spring Pins

Stainless Steel, ISO 8750 :0.8 - 4mm Dia.



Part Number	Diameter (ØD)			L	To Fit Hole		Double Shear Strength kN	Part Number	Diameter (ØD)			L	To Fit Hole		Double Shear Strength kN
	Nom.	Min.	Max.		Min.	Max.			Nom.	Min.	Max.		Min.	Max.	
EP0.8-4	0.8	0.85	0.91	4	0.80	0.84	-	EP2.5-14	2.5	2.62	2.79	14	2.49	2.60	2.9
EP0.8-6	0.8	0.85	0.91	6	0.80	0.84	-	EP2.5-16	2.5	2.62	2.79	16	2.49	2.60	2.9
EP0.8-8	0.8	0.85	0.91	8	0.80	0.84	-	EP2.5-18	2.5	2.62	2.79	18	2.49	2.60	2.9
EP0.8-10	0.8	0.85	0.91	10	0.80	0.84	-	EP2.5-20	2.5	2.62	2.79	20	2.49	2.60	2.9
EP0.8-12	0.8	0.85	0.91	12	0.80	0.84	-	EP2.5-22	2.5	2.62	2.79	22	2.49	2.60	2.9
EP1-4	1.0	1.05	1.15	4	1.00	1.04	-	EP2.5-24	2.5	2.62	2.79	24	2.49	2.60	2.9
EP1-5	1.0	1.05	1.15	5	1.00	1.04	-	EP3-10	3.0	3.15	3.30	10	2.99	3.10	4.2
EP1-6	1.0	1.05	1.15	6	1.00	1.04	-	EP3-12	3.0	3.15	3.30	12	2.99	3.10	4.2
EP1-8	1.0	1.05	1.15	8	1.00	1.04	-	EP3-14	3.0	3.15	3.30	14	2.99	3.10	4.2
EP1-10	1.0	1.05	1.15	10	1.00	1.04	-	EP3-16	3.0	3.15	3.30	16	2.99	3.10	4.2
EP1-12	1.0	1.05	1.15	12	1.00	1.04	-	EP3-18	3.0	3.15	3.30	18	2.99	3.10	4.2
EP1-14	1.0	1.05	1.15	14	1.00	1.04	-	EP3-20	3.0	3.15	3.30	20	2.99	3.10	4.2
EP1-16	1.0	1.05	1.15	16	1.00	1.04	-	EP3-22	3.0	3.15	3.30	22	2.99	3.10	4.2
EP1.2-4	1.2	1.25	1.35	4	1.20	1.24	-	EP3-24	3.0	3.15	3.30	24	2.99	3.10	4.2
EP1.2-8	1.2	1.25	1.35	8	1.20	1.24	-	EP3-26	3.0	3.15	3.30	26	2.99	3.10	4.2
EP1.2-10	1.2	1.25	1.35	10	1.20	1.24	-	EP3-28	3.0	3.15	3.30	28	2.99	3.10	4.2
EP1.2-12	1.2	1.25	1.35	12	1.20	1.24	-	EP3-30	3.0	3.15	3.30	30	2.99	3.10	4.2
EP1.5-5	1.5	1.62	1.73	5	1.50	1.60	1.05	EP3-35	3.0	3.15	3.30	35	2.99	3.10	4.2
EP1.5-6	1.5	1.62	1.73	6	1.50	1.60	1.05	EP3-40	3.0	3.15	3.30	40	2.99	3.10	4.2
EP1.5-8	1.5	1.62	1.73	8	1.50	1.60	1.05	EP3.5-12	3.5	3.64	3.79	12	3.48	3.62	-
EP1.5-10	1.5	1.62	1.73	10	1.50	1.60	1.05	EP3.5-16	3.5	3.64	3.79	16	3.48	3.62	-
EP1.5-12	1.5	1.62	1.73	12	1.50	1.60	1.05	EP3.5-18	3.5	3.64	3.79	18	3.48	3.62	-
EP1.5-14	1.5	1.62	1.73	14	1.50	1.60	1.05	EP3.5-20	3.5	3.64	3.79	20	3.48	3.62	-
EP1.5-16	1.5	1.62	1.73	16	1.50	1.60	1.05	EP3.5-22	3.5	3.64	3.79	22	3.48	3.62	-
EP1.5-20	1.5	1.62	1.73	20	1.50	1.60	1.05	EP3.5-24	3.5	3.64	3.79	24	3.48	3.62	-
EP1.5-24	1.5	1.62	1.73	24	1.50	1.60	1.05	EP3.5-28	3.5	3.64	3.79	28	3.48	3.62	-
EP2-6	2.0	2.13	2.25	6	1.99	2.10	1.90	EP3.5-30	3.5	3.64	3.79	30	3.48	3.62	-
EP2-8	2.0	2.13	2.25	8	1.99	2.10	1.90	EP4-12	4.0	4.20	4.40	12	3.98	4.12	7.6
EP2-10	2.0	2.13	2.25	10	1.99	2.10	1.90	EP4-14	4.0	4.20	4.40	14	3.98	4.12	7.6
EP2-12	2.0	2.13	2.25	12	1.99	2.10	1.90	EP4-16	4.0	4.20	4.40	16	3.98	4.12	7.6
EP2-14	2.0	2.13	2.25	14	1.99	2.10	1.90	EP4-18	4.0	4.20	4.40	18	3.98	4.12	7.6
EP2-16	2.0	2.13	2.25	16	1.99	2.10	1.90	EP4-20	4.0	4.20	4.40	20	3.98	4.12	7.6
EP2-18	2.0	2.13	2.25	18	1.99	2.10	1.90	EP4-22	4.0	4.20	4.40	22	3.98	4.12	7.6
EP2-20	2.0	2.13	2.25	20	1.99	2.10	1.90	EP4-24	4.0	4.20	4.40	24	3.98	4.12	7.6
EP2-30	2.0	2.13	2.25	30	1.99	2.10	1.90	EP4-26	4.0	4.20	4.40	26	3.98	4.12	7.6
EP2.5-8	2.0	2.13	2.25	8	1.99	2.10	1.90	EP4-28	4.0	4.20	4.40	28	3.98	4.12	7.6
EP2.5-10	2.0	2.13	2.25	10	1.99	2.10	1.90	EP4-30	4.0	4.20	4.40	30	3.98	4.12	7.6
EP2.5-12	2.0	2.13	2.25	12	1.99	2.10	1.90	EP4-35	4.0	4.20	4.40	35	3.98	4.12	7.6

Material

A2 Stainless Steel.

Other sizes (0.8 to 16mm diameters) and lengths plus Inch sizes available, P.O.A. ISO 8748 (heavy duty) and ISO 8751 (light duty) available for 1.5 to 8mm diameters, P.O.A.

Minimum Double Shear Strength: Tested to ISO 8749.

Features

Coiled spring pins consist of 2¼ coils and have swaged chamfers at each end.

They are designed for plain drilled holes, but countersinking makes insertion easier.

The coiled design improves shock absorption as the load is spread over more than one coil.

Assembly is easier as the insertion force needed is lower.

The pins cannot interlock when in bulk, which is a benefit when they are to be barrel plated or installed using bowl-fed equipment.



+44 (0)1246 455500



+44 (0)1246 455522

ondrives



sales@ondrives.com



www.ondrives.com

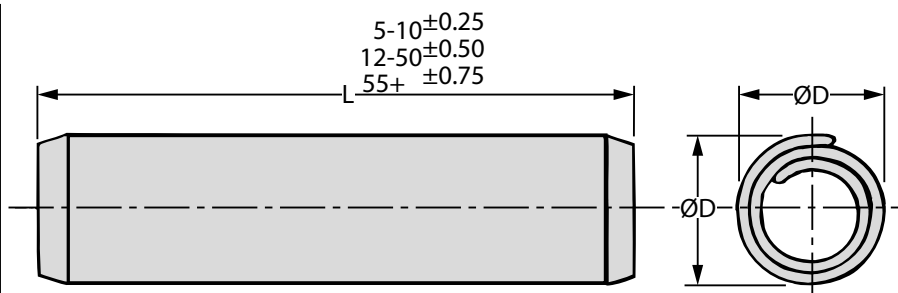
Product information updated August 2017 and subject to change. Please click the product links for prices and availability.

EP

MECHANICAL

Coiled Spring Pins

Stainless Steel, ISO 8750 : 4 - 12mm Dia.



Part Number	Diameter (ØD)			L	To Fit Hole		Double Shear Strength kN	Part Number	Diameter (ØD)			L	To Fit Hole		Double Shear Strength kN
	Nom.	Min.	Max.		Min.	Max.			Nom.	Min.	Max.		Min.	Max.	
EP4-40	4	4.20	4.40	40	3.98	4.12	7.6	EP8-45	8	8.30	8.63	45	7.93	8.17	30.0
EP4-45	4	4.20	4.40	45	3.98	4.12	7.6	EP8-50	8	8.30	8.63	50	7.93	8.17	30.0
EP4-50	4	4.20	4.40	50	3.98	4.12	7.6	EP8-60	8	8.30	8.63	60	7.93	8.17	30.0
EP5-14	5	5.25	5.50	14	4.95	5.12	11.5	EP8-65	8	8.30	8.63	65	7.93	8.17	30.0
EP5-16	5	5.25	5.50	16	4.95	5.12	11.5	EP8-70	8	8.30	8.63	70	7.93	8.17	30.0
EP5-18	5	5.25	5.50	18	4.95	5.12	11.5	EP8-75	8	8.30	8.63	75	7.93	8.17	30.0
EP5-20	5	5.25	5.50	20	4.95	5.12	11.5	EP10-24	10	10.30	10.65	24	9.96	10.20	-
EP5-22	5	5.25	5.50	22	4.95	5.12	11.5	EP10-26	10	10.30	10.65	26	9.96	10.20	-
EP5-24	5	5.25	5.50	24	4.95	5.12	11.5	EP10-28	10	10.30	10.65	28	9.96	10.20	-
EP5-26	5	5.25	5.50	26	4.95	5.12	11.5	EP10-30	10	10.30	10.65	30	9.96	10.20	-
EP5-28	5	5.25	5.50	28	4.95	5.12	11.5	EP10-35	10	10.30	10.65	35	9.96	10.20	-
EP5-30	5	5.25	5.50	30	4.95	5.12	11.5	EP10-40	10	10.30	10.65	40	9.96	10.20	-
EP5-35	5	5.25	5.50	35	4.95	5.12	11.5	EP10-45	10	10.30	10.65	45	9.96	10.20	-
EP5-40	5	5.25	5.50	40	4.95	5.12	11.5	EP10-50	10	10.30	10.65	50	9.96	10.20	-
EP5-45	5	5.25	5.50	45	4.95	5.12	11.5	EP10-55	10	10.30	10.65	55	9.96	10.20	-
EP5-50	5	5.25	5.50	50	4.95	5.12	11.5	EP10-60	10	10.30	10.65	60	9.96	10.20	-
EP6-16	6	6.25	6.50	16	5.95	6.13	16.8	EP10-65	10	10.30	10.65	65	9.96	10.20	-
EP6-18	6	6.25	6.50	18	5.95	6.13	16.8	EP10-70	10	10.30	10.65	70	9.96	10.20	-
EP6-20	6	6.25	6.50	20	5.95	6.13	16.8	EP10-75	10	10.30	10.65	75	9.96	10.20	-
EP6-22	6	6.25	6.50	22	5.95	6.13	16.8	EP10-80	10	10.30	10.65	80	9.96	10.20	-
EP6-24	6	6.25	6.50	24	5.95	6.13	16.8	EP10-85	10	10.30	10.65	85	9.96	10.20	-
EP6-26	6	6.25	6.50	26	5.95	6.13	16.8	EP12-30	12	12.35	12.75	30	11.90	12.22	-
EP6-28	6	6.25	6.50	28	5.95	6.13	16.8	EP12-35	12	12.35	12.75	35	11.90	12.22	-
EP6-30	6	6.25	6.50	30	5.95	6.13	16.8	EP12-40	12	12.35	12.75	40	11.90	12.22	-
EP6-35	6	6.25	6.50	35	5.95	6.13	16.8	EP12-45	12	12.35	12.75	45	11.90	12.22	-
EP6-40	6	6.25	6.50	40	5.95	6.13	16.8	EP12-50	12	12.35	12.75	50	11.90	12.22	-
EP6-45	6	6.25	6.50	45	5.95	6.13	16.8	EP12-55	12	12.35	12.75	55	11.90	12.22	-
EP6-50	6	6.25	6.50	50	5.95	6.13	16.8	EP12-60	12	12.35	12.75	60	11.90	12.22	-
EP6-55	6	6.25	6.50	55	5.95	6.13	16.8	EP12-65	12	12.35	12.75	65	11.90	12.22	-
EP6-60	6	6.25	6.50	60	5.95	6.13	16.8	EP12-70	12	12.35	12.75	70	11.90	12.22	-
EP8-20	8	8.30	8.63	20	7.93	8.17	30.0	EP12-75	12	12.35	12.75	75	11.90	12.22	-
EP8-22	8	8.30	8.63	22	7.93	8.17	30.0	EP12-80	12	12.35	12.75	80	11.90	12.22	-
EP8-24	8	8.30	8.63	24	7.93	8.17	30.0	EP12-85	12	12.35	12.75	85	11.90	12.22	-
EP8-26	8	8.30	8.63	26	7.93	8.17	30.0	EP12-90	12	12.35	12.75	90	11.90	12.22	-
EP8-28	8	8.30	8.63	28	7.93	8.17	30.0	EP12-95	12	12.35	12.75	95	11.90	12.22	-
EP8-30	8	8.30	8.63	24	7.93	8.17	30.0								
EP8-35	8	8.30	8.63	26	7.93	8.17	30.0								
EP8-40	8	8.30	8.63	28	7.93	8.17	30.0								

Material

A2 Stainless Steel.

Other sizes (0.8 to 16mm diameters) and lengths plus Inch sizes available, P.O.A. ISO 8748 (heavy duty) and ISO 8751 (light duty) available for 1.5 to 8mm diameters, P.O.A.

Minimum Double Shear Strength: Tested to ISO 8749.

Features

Coiled spring pins consist of 2¼ coils and have swaged chamfers at each end.

They are designed for plain drilled holes, but countersinking makes insertion easier.

The coiled design improves shock absorption as the load is spread over more than one coil.

Assembly is easier as the insertion force needed is lower.

The pins cannot interlock when in bulk, which is a benefit when they are to be barrel plated or installed using bowl-fed equipment.



+44 (0)1246 455500

+44 (0)1246 455522

ondrives



sales@ondrives.com

www.ondrives.com

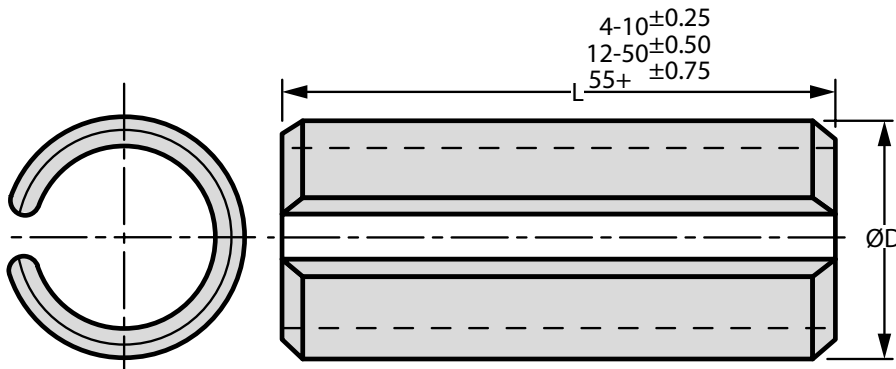
Product information updated August 2017 and subject to change. Please click the product links for prices and availability.

SAP

MECHANICAL

Slotted Spring Pins

Carbon Steel, ISO 8752 : 1.5 - 4mm Dia.



ØD refers to the expanded diameter before insertion.

Part Number	Diameter (ØD)			L	To Fit Hole		Double Shear Strength kN	Part Number	Diameter (ØD)			L	To Fit Hole		Double Shear Strength kN
	Nom.	Min.	Max.		Min.	Max.			Nom.	Min.	Max.		Min.	Max.	
SAP1.5-4	1.5	1.7	1.8	4	1.5	1.6	1.58	SAP2.5-24	2.5	2.8	2.9	24	3.00	3.10	4.38
SAP1.5-5	1.5	1.7	1.8	5	1.5	1.6	1.58	SAP2.5-26	2.5	2.8	2.9	26	3.00	3.10	4.38
SAP1.5-6	1.5	1.7	1.8	6	1.5	1.6	1.58	SAP2.5-28	2.5	2.8	2.9	28	3.00	3.10	4.38
SAP1.5-8	1.5	1.7	1.8	8	1.5	1.6	1.58	SAP2.5-30	2.5	2.8	2.9	30	3.00	3.10	4.38
SAP1.5-10	1.5	1.7	1.8	10	1.5	1.6	1.58	SAP3-4	3.0	3.3	3.5	4	3.00	3.10	6.32
SAP1.5-12	1.5	1.7	1.8	12	1.5	1.6	1.58	SAP3-5	3.0	3.3	3.5	5	3.00	3.10	6.32
SAP1.5-14	1.5	1.7	1.8	14	1.5	1.6	1.58	SAP3-6	3.0	3.3	3.5	6	3.00	3.10	6.32
SAP1.5-16	1.5	1.7	1.8	16	1.5	1.6	1.58	SAP3-8	3.0	3.3	3.5	8	3.00	3.10	6.32
SAP1.5-18	1.5	1.7	1.8	18	1.5	1.6	1.58	SAP3-10	3.0	3.3	3.5	10	3.00	3.10	6.32
SAP1.5-20	1.5	1.7	1.8	20	1.5	1.6	1.58	SAP3-12	3.0	3.3	3.5	12	3.00	3.10	6.32
SAP2-5	2.0	2.3	2.4	5	2.0	2.1	2.82	SAP3-14	3.0	3.3	3.5	14	3.00	3.10	6.32
SAP2-6	2.0	2.3	2.4	6	2.0	2.1	2.82	SAP3-16	3.0	3.3	3.5	16	3.00	3.10	6.32
SAP2-8	2.0	2.3	2.4	8	2.0	2.1	2.82	SAP3-18	3.0	3.3	3.5	18	3.00	3.10	6.32
SAP2-10	2.0	2.3	2.4	10	2.0	2.1	2.82	SAP3-20	3.0	3.3	3.5	20	3.00	3.10	6.32
SAP2-12	2.0	2.3	2.4	12	2.0	2.1	2.82	SAP3-22	3.0	3.3	3.5	22	3.00	3.10	6.32
SAP2-14	2.0	2.3	2.4	14	2.0	2.1	2.82	SAP3-24	3.0	3.3	3.5	24	3.00	3.10	6.32
SAP2-16	2.0	2.3	2.4	16	2.0	2.1	2.82	SAP3-26	3.0	3.3	3.5	26	3.00	3.10	6.32
SAP2-18	2.0	2.3	2.4	18	2.0	2.1	2.82	SAP3-28	3.0	3.3	3.5	28	3.00	3.10	6.32
SAP2-20	2.0	2.3	2.4	20	2.0	2.1	2.82	SAP3-30	3.0	3.3	3.5	30	3.00	3.10	6.32
SAP2-22	2.0	2.3	2.4	22	2.0	2.1	2.82	SAP3-32	3.0	3.3	3.5	32	3.00	3.10	6.32
SAP2-24	2.0	2.3	2.4	24	2.0	2.1	2.82	SAP3-35	3.0	3.3	3.5	35	3.00	3.10	6.32
SAP2-26	2.0	2.3	2.4	26	2.0	2.1	2.82	SAP3-40	3.0	3.3	3.5	40	3.00	3.10	6.32
SAP2-28	2.0	2.3	2.4	28	2.0	2.1	2.82	SAP3-45	3.0	3.3	3.5	45	3.00	3.10	6.32
SAP2-30	2.0	2.3	2.4	30	2.0	2.1	2.82	SAP3-50	3.0	3.3	3.5	50	3.00	3.10	6.32
SAP2.5-4	2.5	2.8	2.9	4	2.5	2.6	4.38	SAP4-6	4.0	4.4	4.6	6	4.00	4.12	11.24
SAP2.5-5	2.5	2.8	2.9	5	2.5	2.6	4.38	SAP4-8	4.0	4.4	4.6	8	4.00	4.12	11.24
SAP2.5-6	2.5	2.8	2.9	6	2.5	2.6	4.38	SAP4-10	4.0	4.4	4.6	10	4.00	4.12	11.24
SAP2.5-8	2.5	2.8	2.9	8	2.5	2.6	4.38	SAP4-12	4.0	4.4	4.6	12	4.00	4.12	11.24
SAP2.5-10	2.5	2.8	2.9	10	2.5	2.6	4.38	SAP4-14	4.0	4.4	4.6	14	4.00	4.12	11.24
SAP2.5-12	2.5	2.8	2.9	12	2.5	2.6	4.38	SAP4-16	4.0	4.4	4.6	16	4.00	4.12	11.24
SAP2.5-14	2.5	2.8	2.9	14	2.5	2.6	4.38	SAP4-18	4.0	4.4	4.6	18	4.00	4.12	11.24
SAP2.5-16	2.5	2.8	2.9	16	2.5	2.6	4.38	SAP4-20	4.0	4.4	4.6	20	4.00	4.12	11.24
SAP2.5-18	2.5	2.8	2.9	18	2.5	2.6	4.38	SAP4-22	4.0	4.4	4.6	22	4.00	4.12	11.24
SAP2.5-20	2.5	2.8	2.9	20	2.5	2.6	4.38	SAP4-24	4.0	4.4	4.6	24	4.00	4.12	11.24
SAP2.5-22	2.5	2.8	2.9	22	2.5	2.6	4.38	SAP4-26	4.0	4.4	4.6	26	4.00	4.12	11.24

Material

Carbon Steel (CS70). Other sizes (1 to 20mm diameters) and lengths plus Inch sizes and selection kits available, P.O.A. ISO 13337 / DIN 7346 (light duty) available, P.O.A.

Minimum Double Shear Strength: Tested to ISO 8749.

Finishes

Slotted spring pins are normally supplied with a plain oiled finish.

Steel pins may be given a protective finish such as zinc or phosphate, etc but for electrolytically applied finishes it is essential to de-embrittle the pins immediately after plating. Since the de-embrittlement process is not completely reliable, non-electrolytic finishes or stainless should be used for safety-critical applications.

Where pins are to be used in plastic assemblies, it is recommended that they are de-oiled before use to avoid embrittlement of the plastic.

Features

Slotted spring pins consist of a single coil of Spring Steel with an open slot sufficiently wide to enable the pin to reduce in diameter as it is driven into a hole of appropriate size. The ends of the pin have a bevelled chamfer. They are designed for plain drilled holes but a countersink makes assembly easier.

It is possible to increase the shear strength of slotted pins by inserting a small diameter inside a large one (inserting the larger pin first, then the smaller one, taking care that the slot is between 90° and 180° away from the slot in the larger pin): Outer pin (Inner pin), 3.5 (2), 5 (3), 6 (3.5), 8 (5), 10 (6), 12 (7), 14 (8), 16 (10), 20 (12).

+44 (0)1246 455500
+44 (0)1246 455522

ondrives

sales@ondrives.com
www.ondrives.com

Product information updated August 2017 and subject to change. Please click the product links for prices and availability.

MECHANICAL

Slotted Spring Pins

Carbon Steel, ISO 8752 : 4 - 12mm Dia.

SAP

Part Number	Diameter (ØD)			L	To Fit Hole		Double Shear Strength kN	Part Number	Diameter (ØD)			L	To Fit Hole		Double Shear Strength kN
	Nom.	Min.	Max.		Min.	Max.			Nom.	Min.	Max.		Min.	Max.	
SAP4-28	4	4.4	4.6	28	4.00	4.12	11.24	SAP8-30	8	8.5	8.8	30	8.00	8.15	42.76
SAP4-30	4	4.4	4.6	30	4.00	4.12	11.24	SAP8-32	8	8.5	8.8	32	8.00	8.15	42.76
SAP4-32	4	4.4	4.6	32	4.00	4.12	11.24	SAP8-35	8	8.5	8.8	35	8.00	8.15	42.76
SAP4-36	4	4.4	4.6	36	4.00	4.12	11.24	SAP8-36	8	8.5	8.8	36	8.00	8.15	42.76
SAP4-40	4	4.4	4.6	40	4.00	4.12	11.24	SAP8-40	8	8.5	8.8	40	8.00	8.15	42.76
SAP4-45	4	4.4	4.6	45	4.00	4.12	11.24	SAP8-45	8	8.5	8.8	45	8.00	8.15	42.76
SAP4-50	4	4.4	4.6	50	4.00	4.12	11.24	SAP8-50	8	8.5	8.8	50	8.00	8.15	42.76
SAP5-8	5	5.4	5.6	8	5.00	5.12	17.54	SAP8-55	8	8.5	8.8	55	8.00	8.15	42.76
SAP5-10	5	5.4	5.6	10	5.00	5.12	17.54	SAP8-60	8	8.5	8.8	60	8.00	8.15	42.76
SAP5-12	5	5.4	5.6	12	5.00	5.12	17.54	SAP8-65	8	8.5	8.8	65	8.00	8.15	42.76
SAP5-14	5	5.4	5.6	14	5.00	5.12	17.54	SAP8-70	8	8.5	8.8	70	8.00	8.15	42.76
SAP5-16	5	5.4	5.6	16	5.00	5.12	17.54	SAP8-75	8	8.5	8.8	75	8.00	8.15	42.76
SAP5-18	5	5.4	5.6	18	5.00	5.12	17.54	SAP8-80	8	8.5	8.8	80	8.00	8.15	42.76
SAP5-20	5	5.4	5.6	20	5.00	5.12	17.54	SAP8-85	8	8.5	8.8	85	8.00	8.15	42.76
SAP5-22	5	5.4	5.6	22	5.00	5.12	17.54	SAP8-90	8	8.5	8.8	90	8.00	8.15	42.76
SAP5-24	5	5.4	5.6	24	5.00	5.12	17.54	SAP8-95	8	8.5	8.8	95	8.00	8.15	42.76
SAP5-26	5	5.4	5.6	26	5.00	5.12	17.54	SAP8-100	8	8.5	8.8	100	8.00	8.15	42.76
SAP5-28	5	5.4	5.6	28	5.00	5.12	17.54	SAP8-120	8	8.5	8.8	120	8.00	8.15	42.76
SAP5-30	5	5.4	5.6	30	5.00	5.12	17.54	SAP10-16	10	10.5	10.8	16	10.00	10.15	70.16
SAP5-32	5	5.4	5.6	32	5.00	5.12	17.54	SAP10-18	10	10.5	10.8	18	10.00	10.15	70.16
SAP5-40	5	5.4	5.6	40	5.00	5.12	17.54	SAP10-20	10	10.5	10.8	20	10.00	10.15	70.16
SAP5-45	5	5.4	5.6	45	5.00	5.12	17.54	SAP10-22	10	10.5	10.8	22	10.00	10.15	70.16
SAP5-50	5	5.4	5.6	50	5.00	5.12	17.54	SAP10-24	10	10.5	10.8	24	10.00	10.15	70.16
SAP5-55	5	5.4	5.6	55	5.00	5.12	17.54	SAP10-26	10	10.5	10.8	26	10.00	10.15	70.16
SAP5-60	5	5.4	5.6	60	5.00	5.12	17.54	SAP10-28	10	10.5	10.8	28	10.00	10.15	70.16
SAP5-65	5	5.4	5.6	65	5.00	5.12	17.54	SAP10-30	10	10.5	10.8	30	10.00	10.15	70.16
SAP5-70	5	5.4	5.6	70	5.00	5.12	17.54	SAP10-32	10	10.5	10.8	32	10.00	10.15	70.16
SAP5-75	5	5.4	5.6	75	5.00	5.12	17.54	SAP10-35	10	10.5	10.8	35	10.00	10.15	70.16
SAP5-80	5	5.4	5.6	80	5.00	5.12	17.54	SAP10-36	10	10.5	10.8	36	10.00	10.15	70.16
SAP6-10	6	6.4	6.7	10	6.00	6.12	26.04	SAP10-40	10	10.5	10.8	40	10.00	10.15	70.16
SAP6-12	6	6.4	6.7	12	6.00	6.12	26.04	SAP10-45	10	10.5	10.8	45	10.00	10.15	70.16
SAP6-14	6	6.4	6.7	14	6.00	6.12	26.04	SAP10-50	10	10.5	10.8	50	10.00	10.15	70.16
SAP6-16	6	6.4	6.7	16	6.00	6.12	26.04	SAP10-55	10	10.5	10.8	55	10.00	10.15	70.16
SAP6-18	6	6.4	6.7	18	6.00	6.12	26.04	SAP10-60	10	10.5	10.8	60	10.00	10.15	70.16
SAP6-20	6	6.4	6.7	20	6.00	6.12	26.04	SAP10-65	10	10.5	10.8	65	10.00	10.15	70.16
SAP6-22	6	6.4	6.7	22	6.00	6.12	26.04	SAP10-70	10	10.5	10.8	70	10.00	10.15	70.16
SAP6-24	6	6.4	6.7	24	6.00	6.12	26.04	SAP10-75	10	10.5	10.8	75	10.00	10.15	70.16
SAP6-26	6	6.4	6.7	26	6.00	6.12	26.04	SAP10-80	10	10.5	10.8	80	10.00	10.15	70.16
SAP6-28	6	6.4	6.7	28	6.00	6.12	26.04	SAP10-85	10	10.5	10.8	85	10.00	10.15	70.16
SAP6-30	6	6.4	6.7	30	6.00	6.12	26.04	SAP10-90	10	10.5	10.8	90	10.00	10.15	70.16
SAP6-32	6	6.4	6.7	32	6.00	6.12	26.04	SAP10-95	10	10.5	10.8	95	10.00	10.15	70.16
SAP6-36	6	6.4	6.7	36	6.00	6.12	26.04	SAP10-100	10	10.5	10.8	100	10.00	10.15	70.16
SAP6-40	6	6.4	6.7	40	6.00	6.12	26.04	SAP12-18	12	12.5	12.8	18	12.00	12.18	104.10
SAP6-45	6	6.4	6.7	45	6.00	6.12	26.04	SAP12-20	12	12.5	12.8	20	12.00	12.18	104.10
SAP6-50	6	6.4	6.7	50	6.00	6.12	26.04	SAP12-22	12	12.5	12.8	22	12.00	12.18	104.10
SAP6-55	6	6.4	6.7	55	6.00	6.12	26.04	SAP12-24	12	12.5	12.8	24	12.00	12.18	104.10
SAP6-60	6	6.4	6.7	60	6.00	6.12	26.04	SAP12-26	12	12.5	12.8	26	12.00	12.18	104.10
SAP6-65	6	6.4	6.7	65	6.00	6.12	26.04	SAP12-28	12	12.5	12.8	28	12.00	12.18	104.10
SAP6-70	6	6.4	6.7	70	6.00	6.12	26.04	SAP12-30	12	12.5	12.8	30	12.00	12.18	104.10
SAP6-75	6	6.4	6.7	75	6.00	6.12	26.04	SAP12-32	12	12.5	12.8	32	12.00	12.18	104.10
SAP6-80	6	6.4	6.7	80	6.00	6.12	26.04	SAP12-35	12	12.5	12.8	35	12.00	12.18	104.10
SAP6-85	6	6.4	6.7	85	6.00	6.12	26.04	SAP12-36	12	12.5	12.8	36	12.00	12.18	104.10
SAP6-90	6	6.4	6.7	90	6.00	6.12	26.04	SAP12-40	12	12.5	12.8	40	12.00	12.18	104.10
SAP6-95	6	6.4	6.7	95	6.00	6.12	26.04	SAP12-45	12	12.5	12.8	45	12.00	12.18	104.10
SAP6-100	6	6.4	6.7	100	6.00	6.12	26.04	SAP12-50	12	12.5	12.8	50	12.00	12.18	104.10
SAP8-10	8	8.5	8.8	10	8.00	8.15	42.76	SAP12-55	12	12.5	12.8	55	12.00	12.18	104.10
SAP8-12	8	8.5	8.8	12	8.00	8.15	42.76	SAP12-60	12	12.5	12.8	60	12.00	12.18	104.10
SAP8-14	8	8.5	8.8	14	8.00	8.15	42.76	SAP12-65	12	12.5	12.8	65	12.00	12.18	104.10
SAP8-16	8	8.5	8.8	16	8.00	8.15	42.76	SAP12-70	12	12.5	12.8	70	12.00	12.18	104.10
SAP8-18	8	8.5	8.8	18	8.00	8.15	42.76	SAP12-75	12	12.5	12.8	75	12.00	12.18	104.10
SAP8-20	8	8.5	8.8	20	8.00	8.15	42.76	SAP12-80	12	12.5	12.8	80	12.00	12.18	104.10
SAP8-22	8	8.5	8.8	22	8.00	8.15	42.76	SAP12-85	12	12.5	12.8	85	12.00	12.18	104.10
SAP8-24	8	8.5	8.8	24	8.00	8.15	42.76	SAP12-90	12	12.5	12.8	90	12.00	12.18	104.10
SAP8-26	8	8.5	8.8	26	8.00	8.15	42.76	SAP12-95	12	12.5	12.8	95	12.00	12.18	104.10
SAP8-28	8	8.5	8.8	28	8.00	8.15	42.76	SAP12-100	12	12.5	12.8	100	12.00	12.18	104.10



+44 (0)1246 455500



+44 (0)1246 455522

ondrives



sales@ondrives.com



www.ondrives.com

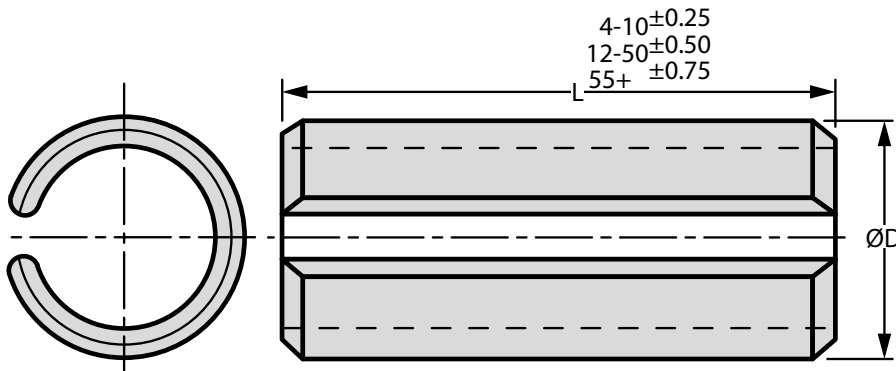
Product information updated August 2017 and subject to change. Please click the product links for prices and availability.

SRP

MECHANICAL

Slotted Spring Pins

Stainless Steel, ISO 8752 : 1.5 - 4mm Dia.



$\varnothing D$ refers to the expanded diameter before insertion.

Part Number	Diameter ($\varnothing D$)			L	To Fit Hole		Double Shear Strength kN
	Nom.	Min.	Max.		Min.	Max.	
SRP1.5-5	1.5	1.7	1.8	5	1.5	1.6	0.98
SRP1.5-6	1.5	1.7	1.8	6	1.5	1.6	0.98
SRP1.5-8	1.5	1.7	1.8	8	1.5	1.6	0.98
SRP1.5-10	1.5	1.7	1.8	10	1.5	1.6	0.98
SRP1.5-12	1.5	1.7	1.8	12	1.5	1.6	0.98
SRP1.5-14	1.5	1.7	1.8	14	1.5	1.6	0.98
SRP1.5-16	1.5	1.7	1.8	16	1.5	1.6	0.98
SRP1.5-18	1.5	1.7	1.8	18	1.5	1.6	0.98
SRP1.5-20	1.5	1.7	1.8	20	1.5	1.6	0.98
SRP2-4	2.0	2.3	2.4	4	2.0	2.1	1.81
SRP2-5	2.0	2.3	2.4	5	2.0	2.1	1.81
SRP2-6	2.0	2.3	2.4	6	2.0	2.1	1.81
SRP2-8	2.0	2.3	2.4	8	2.0	2.1	1.81
SRP2-10	2.0	2.3	2.4	10	2.0	2.1	1.81
SRP2-12	2.0	2.3	2.4	12	2.0	2.1	1.81
SRP2-14	2.0	2.3	2.4	14	2.0	2.1	1.81
SRP2-16	2.0	2.3	2.4	16	2.0	2.1	1.81
SRP2-18	2.0	2.3	2.4	18	2.0	2.1	1.81
SRP2-20	2.0	2.3	2.4	20	2.0	2.1	1.81
SRP2-22	2.0	2.3	2.4	22	2.0	2.1	1.81
SRP2-24	2.0	2.3	2.4	24	2.0	2.1	1.81
SRP2-26	2.0	2.3	2.4	26	2.0	2.1	1.81
SRP2-28	2.0	2.3	2.4	28	2.0	2.1	1.81
SRP2-30	2.0	2.3	2.4	30	2.0	2.1	1.81
SRP2.5-5	2.5	2.8	2.9	5	2.5	2.6	2.84
SRP2.5-6	2.5	2.8	2.9	6	2.5	2.6	2.84
SRP2.5-8	2.5	2.8	2.9	8	2.5	2.6	2.84
SRP2.5-10	2.5	2.8	2.9	10	2.5	2.6	2.84
SRP2.5-12	2.5	2.8	2.9	12	2.5	2.6	2.84
SRP2.5-14	2.5	2.8	2.9	14	2.5	2.6	2.84
SRP2.5-16	2.5	2.8	2.9	16	2.5	2.6	2.84
SRP2.5-18	2.5	2.8	2.9	18	2.5	2.6	2.84
SRP2.5-20	2.5	2.8	2.9	20	2.5	2.6	2.84

Part Number	Diameter ($\varnothing D$)			L	To Fit Hole		Double Shear Strength kN
	Nom.	Min.	Max.		Min.	Max.	
SRP2.5-22	2.5	2.8	2.9	22	2.50	2.60	2.84
SRP2.5-24	2.5	2.8	2.9	24	2.50	2.60	2.84
SRP2.5-26	2.5	2.8	2.9	26	2.50	2.60	2.84
SRP2.5-30	2.5	2.8	2.9	30	2.50	2.60	2.84
SRP3-5	3.0	3.3	3.5	5	3.00	3.10	4.07
SRP3-6	3.0	3.3	3.5	6	3.00	3.10	4.07
SRP3-8	3.0	3.3	3.5	8	3.00	3.10	4.07
SRP3-10	3.0	3.3	3.5	10	3.00	3.10	4.07
SRP3-12	3.0	3.3	3.5	12	3.00	3.10	4.07
SRP3-14	3.0	3.3	3.5	14	3.00	3.10	4.07
SRP3-16	3.0	3.3	3.5	16	3.00	3.10	4.07
SRP3-18	3.0	3.3	3.5	18	3.00	3.10	4.07
SRP3-20	3.0	3.3	3.5	20	3.00	3.10	4.07
SRP3-22	3.0	3.3	3.5	22	3.00	3.10	4.07
SRP3-24	3.0	3.3	3.5	24	3.00	3.10	4.07
SRP3-26	3.0	3.3	3.5	26	3.00	3.10	4.07
SRP3-28	3.0	3.3	3.5	28	3.00	3.10	4.07
SRP3-30	3.0	3.3	3.5	30	3.00	3.10	4.07
SRP3-32	3.0	3.3	3.5	32	3.00	3.10	4.07
SRP3-35	3.0	3.3	3.5	35	3.00	3.10	4.07
SRP3-40	3.0	3.3	3.5	40	3.00	3.10	4.07
SRP4-6	4.0	4.4	4.6	6	4.00	4.12	7.25
SRP4-8	4.0	4.4	4.6	8	4.00	4.12	7.25
SRP4-10	4.0	4.4	4.6	10	4.00	4.12	7.25
SRP4-12	4.0	4.4	4.6	12	4.00	4.12	7.25
SRP4-14	4.0	4.4	4.6	14	4.00	4.12	7.25
SRP4-16	4.0	4.4	4.6	16	4.00	4.12	7.25
SRP4-18	4.0	4.4	4.6	18	4.00	4.12	7.25
SRP4-20	4.0	4.4	4.6	20	4.00	4.12	7.25
SRP4-22	4.0	4.4	4.6	22	4.00	4.12	7.25
SRP4-24	4.0	4.4	4.6	24	4.00	4.12	7.25
SRP4-26	4.0	4.4	4.6	26	4.00	4.12	7.25
SRP4-28	4.0	4.4	4.6	28	4.00	4.12	7.25

Material

A2 Stainless Steel.

Other sizes (1 to 20mm diameters) and lengths plus Inch sizes available, P.O.A. ISO 13337 / DIN 7346 (light duty) available, P.O.A. Selection kits available.

Minimum Double Shear Strength: Tested to ISO 8749.

Features

Slotted spring pins consist of a single coil of Stainless Steel with an open slot sufficiently wide to enable the pin to reduce in diameter as it is driven into a hole of appropriate size. The ends of the pin have a bevelled chamfer. They are designed for plain drilled holes but a countersink makes assembly easier.

It is possible to increase the shear strength of slotted pins by inserting a small diameter inside a large one (inserting the larger pin first, then the smaller one, taking care that the slot is between 90° and 180° away from the slot in the larger pin):

Outer pin (Inner pin), 3.5 (2), 5 (3), 6 (3.5), 8 (5), 10 (6), 12 (7), 14 (8), 16 (10), 20 (12).



+44 (0)1246 455500



+44 (0)1246 455522

ondrives



sales@ondrives.com



www.ondrives.com

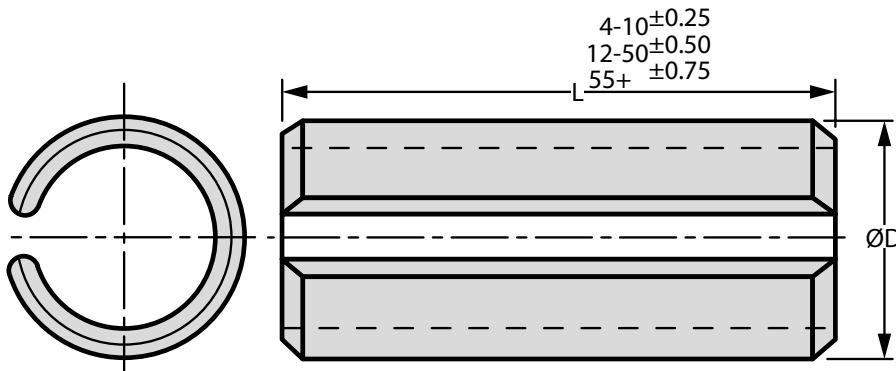
Product information updated August 2017 and subject to change. Please click the product links for prices and availability.

SRP

MECHANICAL

Slotted Spring Pins

Stainless Steel, ISO 8752 : 4 - 10mm Dia.



ØD refers to the expanded diameter before insertion.

Part Number	Diameter (ØD)			L	To Fit Hole		Double Shear Strength kN
	Nom.	Min.	Max.		Min.	Max.	
SRP4-30	4	4.4	4.6	30	4.00	4.12	7.25
SRP4-35	4	4.4	4.6	35	4.00	4.12	7.25
SRP4-40	4	4.4	4.6	40	4.00	4.12	7.25
SRP4-45	4	4.4	4.6	45	4.00	4.12	7.25
SRP4-50	4	4.4	4.6	50	4.00	4.12	7.25
SRP5-8	5	5.4	5.6	8	5.00	5.12	10.75
SRP5-10	5	5.4	5.6	10	5.00	5.12	10.75
SRP5-12	5	5.4	5.6	12	5.00	5.12	10.75
SRP5-14	5	5.4	5.6	14	5.00	5.12	10.75
SRP5-16	5	5.4	5.6	16	5.00	5.12	10.75
SRP5-18	5	5.4	5.6	18	5.00	5.12	10.75
SRP5-20	5	5.4	5.6	20	5.00	5.12	10.75
SRP5-22	5	5.4	5.6	22	5.00	5.12	10.75
SRP5-24	5	5.4	5.6	24	5.00	5.12	10.75
SRP5-26	5	5.4	5.6	26	5.00	5.12	10.75
SRP5-28	5	5.4	5.6	28	5.00	5.12	10.75
SRP5-30	5	5.4	5.6	30	5.00	5.12	10.75
SRP5-32	5	5.4	5.6	32	5.00	5.12	10.75
SRP5-35	5	5.4	5.6	35	5.00	5.12	10.75
SRP5-40	5	5.4	5.6	40	5.00	5.12	10.75
SRP5-45	5	5.4	5.6	45	5.00	5.12	10.75
SRP5-50	5	5.4	5.6	50	5.00	5.12	10.75
SRP6-10	6	6.4	6.7	10	6.00	6.12	16.17
SRP6-12	6	6.4	6.7	12	6.00	6.12	16.17
SRP6-14	6	6.4	6.7	14	6.00	6.12	16.17
SRP6-16	6	6.4	6.7	16	6.00	6.12	16.17
SRP6-18	6	6.4	6.7	18	6.00	6.12	16.17
SRP6-20	6	6.4	6.7	20	6.00	6.12	16.17
SRP6-22	6	6.4	6.7	22	6.00	6.12	16.17
SRP6-24	6	6.4	6.7	24	6.00	6.12	16.17
SRP6-26	6	6.4	6.7	26	6.00	6.12	16.17
SRP6-28	6	6.4	6.7	28	6.00	6.12	16.17
SRP6-30	6	6.4	6.7	30	6.00	6.12	16.17

Part Number	Diameter (ØD)			L	To Fit Hole		Double Shear Strength kN
	Nom.	Min.	Max.		Min.	Max.	
SRP6-32	6	6.4	6.7	32	6.00	6.12	16.17
SRP6-35	6	6.4	6.7	35	6.00	6.12	16.17
SRP6-40	6	6.4	6.7	40	6.00	6.12	16.17
SRP6-45	6	6.4	6.7	45	6.00	6.12	16.17
SRP6-50	6	6.4	6.7	50	6.00	6.12	16.17
SRP8-10	8	8.5	8.8	10	8.00	8.15	26.46
SRP8-12	8	8.5	8.8	12	8.00	8.15	26.46
SRP8-14	8	8.5	8.8	14	8.00	8.15	26.46
SRP8-16	8	8.5	8.8	16	8.00	8.15	26.46
SRP8-18	8	8.5	8.8	18	8.00	8.15	26.46
SRP8-20	8	8.5	8.8	20	8.00	8.15	26.46
SRP8-22	8	8.5	8.8	22	8.00	8.15	26.46
SRP8-24	8	8.5	8.8	24	8.00	8.15	26.46
SRP8-26	8	8.5	8.8	26	8.00	8.15	26.46
SRP8-28	8	8.5	8.8	28	8.00	8.15	26.46
SRP8-30	8	8.5	8.8	30	8.00	8.15	26.46
SRP8-32	8	8.5	8.8	32	8.00	8.15	26.46
SRP8-35	8	8.5	8.8	35	8.00	8.15	26.46
SRP8-40	8	8.5	8.8	40	8.00	8.15	26.46
SRP8-45	8	8.5	8.8	45	8.00	8.15	26.46
SRP8-50	8	8.5	8.8	50	8.00	8.15	26.46
SRP10-20	10	10.5	10.8	20	10.00	10.15	42.14
SRP10-22	10	10.5	10.8	22	10.00	10.15	42.14
SRP10-24	10	10.5	10.8	24	10.00	10.15	42.14
SRP10-26	10	10.5	10.8	26	10.00	10.15	42.14
SRP10-28	10	10.5	10.8	28	10.00	10.15	42.14
SRP10-30	10	10.5	10.8	30	10.00	10.15	42.14
SRP10-32	10	10.5	10.8	32	10.00	10.15	42.14
SRP10-35	10	10.5	10.8	35	10.00	10.15	42.14
SRP10-40	10	10.5	10.8	40	10.00	10.15	42.14
SRP10-50	10	10.5	10.8	50	10.00	10.15	42.14

Material

A2 Stainless Steel.

Other sizes (1 to 20mm diameters) and lengths plus Inch sizes available, P.O.A. ISO 13337 / DIN 7346 (light duty) available, P.O.A. Selection kits available.

Minimum Double Shear Strength: Tested to ISO 8749.

Features

Slotted spring pins consist of a single coil of Stainless Steel with an open slot sufficiently wide to enable the pin to reduce in diameter as it is driven into a hole of appropriate size. The ends of the pin have a bevelled chamfer. They are designed for plain drilled holes but a countersink makes assembly easier.

It is possible to increase the shear strength of slotted pins by inserting a small diameter inside a large one (inserting the larger pin first, then the smaller one, taking care that the slot is between 90° and 180° away from the slot in the larger pin):

Outer pin (Inner pin), 3.5 (2), 5 (3), 6 (3.5), 8 (5), 10 (6), 12 (7), 14 (8), 16 (10), 20 (12).



+44 (0)1246 455500



+44 (0)1246 455522

ondrives



sales@ondrives.com



www.ondrives.com

Product information updated August 2017 and subject to change. Please click the product links for prices and availability.

**RPS
RPD**

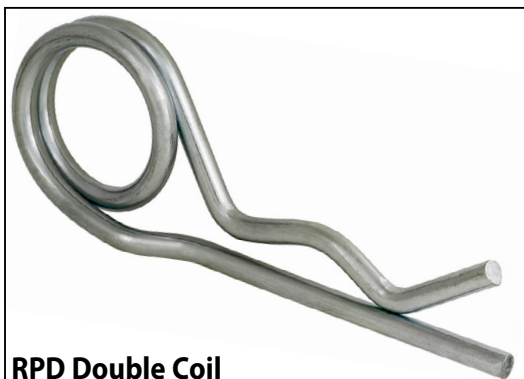
MECHANICAL

Retaining Pins - 'R' Clips

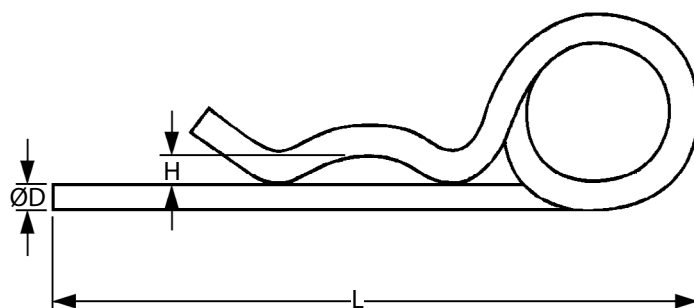
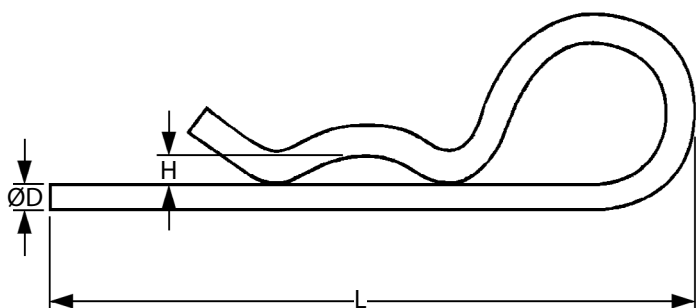
Single and Double Coil



RPS Single Coil



RPD Double Coil



Part Number	Wire Dia. ØD	Length L	Approx. H	Recommended Hole Dia.	Range of Shaft Dia.
SINGLE COIL					
RPS1.2-22	1.2	22	2.0	1.5	5 - 8
RPS1.6-22	1.6	25	2.0	2.0	6 - 10
RPS1.8-32	1.8	36	2.5	2.2	8 - 13
RPS2-50*	2.0	56	3.0	2.5	9 - 14
RPS2.5-48*	2.5	48	4.0	3.0	9 - 14
RPS3-60*	3.0	72	4.5	3.5	10 - 20
RPS4-60*	4.0	76	6.5	4.5	16 - 28
RPS4.5-90*	4.5	90	7.0	5.0	20 - 30
RPS5-85*	5.0	102	7.0	5.5	20 - 35
RPS6-105	6.0	124	8.0	7.0	28 - 40
RPS7-105	7.0	124	10.0	8.0	28 - 45
RPS8-110	8.0	128	11.0	9.0	30 - 45
DOUBLE COIL					
RPD2-50	2.0	56	4.0	2.5	8 - 14
RPD3-62	3.0	72	5.0	3.5	14 - 20
RPD4-78	4.0	92	6.0	4.5	17 - 24
RPD5-92	5.0	108	6.0	5.5	18 - 30
RPD6-120	6.0	138	8.0	6.5	24 - 36
RPD7-130	7.0	148	9.0	8.0	26 - 40
RPD8-130	8.0	149	8.0	9.0	24 - 40

Material

Either Zinc plated or Spring Steel.
Also available in Stainless Steel, P.O.A.

Other Info.

Retaining pins are available in two designs - the single coil for most applications and the double coil for more demanding use.



+44 (0)1246 455500



+44 (0)1246 455522

ondrives



sales@ondrives.com



www.ondrives.com

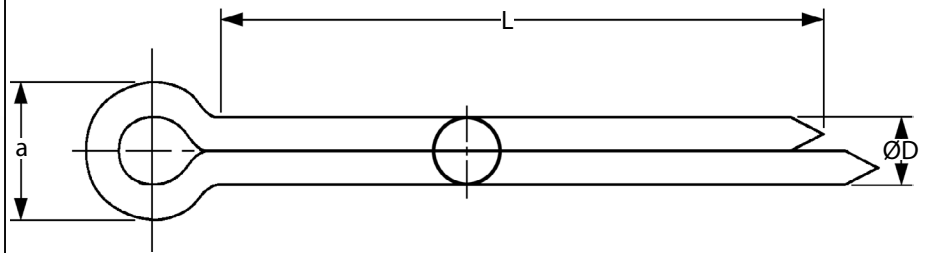
Product information updated August 2017 and subject to change. Please click the product links for prices and availability.

**SCP
SCPS**

MECHANICAL

Split Cotter Pins

DIN 94 (ISO 1234, BS 1574) : To Suit 1 - 2mm Dia. Holes



Part Number		To Suit Hole Dia.	Length L	Min. ØD	Max. ØD	Min. a	Max. a
Steel	Stainless						
SCP1.0-6	-	1.0	6	0.8	0.9	1.6	1.8
SCP1.0-8	-	1.0	8	0.8	0.9	1.6	1.8
SCP1.0-10	-	1.0	10	0.8	0.9	1.6	1.8
SCP1.0-12	-	1.0	12	0.8	0.9	1.6	1.8
SCP1.0-16	-	1.0	16	0.8	0.9	1.6	1.8
SCP1.0-18	-	1.0	18	0.8	0.9	1.6	1.8
SCP1.0-20	-	1.0	20	0.8	0.9	1.6	1.8
SCP1.0-22	-	1.0	22	0.8	0.9	1.6	1.8
SCP1.0-25	-	1.0	25	0.8	0.9	1.6	1.8
SCP1.0-28	-	1.0	28	0.8	0.9	1.6	1.8
SCP1.0-32	-	1.0	32	0.8	0.9	1.6	1.8
SCP1.0-36	-	1.0	36	0.8	0.9	1.6	1.8
SCP1.2-10	SCPS1.2-10	1.2	10	1.1	1.0	1.7	2.0
SCP1.2-12	SCPS1.2-12	1.2	12	1.1	1.0	1.7	2.0
SCP1.2-16	SCPS1.2-16	1.2	16	1.1	1.0	1.7	2.0
SCP1.2-20	SCPS1.2-20	1.2	20	1.1	1.0	1.7	2.0
SCP1.2-22	SCPS1.2-22	1.2	22	1.1	1.0	1.7	2.0
SCP1.2-25	SCPS1.2-25	1.2	25	1.1	1.0	1.7	2.0
SCP1.2-28	SCPS1.2-28	1.2	28	1.1	1.0	1.7	2.0
SCP1.2-32	-	1.2	32	1.1	1.0	1.7	2.0
SCP1.2-36	-	1.2	36	1.1	1.0	1.7	2.0
SCP1.6-10	SCPS1.6-10	1.6	10	1.3	1.4	2.4	2.8
SCP1.6-12	SCPS1.6-12	1.6	12	1.3	1.4	2.4	2.8
SCP1.6-16	SCPS1.6-16	1.6	16	1.3	1.4	2.4	2.8
SCP1.6-18	SCPS1.6-18	1.6	18	1.3	1.4	2.4	2.8
SCP1.6-20	SCPS1.6-20	1.6	20	1.3	1.4	2.4	2.8
SCP1.6-22	SCPS1.6-22	1.6	22	1.3	1.4	2.4	2.8
SCP1.6-25	SCPS1.6-25	1.6	25	1.3	1.4	2.4	2.8
SCP1.6-28	SCPS1.6-28	1.6	28	1.3	1.4	2.4	2.8
SCP1.6-32	SCPS1.6-32	1.6	32	1.3	1.4	2.4	2.8
SCP1.6-36	-	1.6	36	1.3	1.4	2.4	2.8
SCP2.0-10	SCPS2.0-10	2.0	10	1.7	1.8	3.2	3.6
SCP2.0-12	SCPS2.0-12	2.0	12	1.7	1.8	3.2	3.6
SCP2.0-16	SCPS2.0-16	2.0	16	1.7	1.8	3.2	3.6
SCP2.0-18	SCPS2.0-18	2.0	18	1.7	1.8	3.2	3.6
SCP2.0-20	SCPS2.0-20	2.0	20	1.7	1.8	3.2	3.6
SCP2.0-22	SCPS2.0-22	2.0	22	1.7	1.8	3.2	3.6
SCP2.0-25	SCPS2.0-25	2.0	25	1.7	1.8	3.2	3.6
SCP2.0-28	SCPS2.0-28	2.0	28	1.7	1.8	3.2	3.6
SCP2.0-32	SCPS2.0-32	2.0	32	1.7	1.8	3.2	3.6
SCP2.0-36	SCPS2.0-36	2.0	36	1.7	1.8	3.2	3.6
SCP2.0-40	SCPS2.0-40	2.0	40	1.7	1.8	3.2	3.6
SCP2.0-45	SCPS2.0-45	2.0	45	1.7	1.8	3.2	3.6
SCP2.0-50	SCPS2.0-50	2.0	50	1.7	1.8	3.2	3.6

Material

SCP Type: Mild Steel (usually Zinc plated).

SCPS Type: A4 Stainless Steel.

Cotter pins are made to DIN94, equivalent to ISO1234 and BS1574.

Also available in Brass (up to 6.3mm dias.), P.O.A.

Other Info.

Zinc plating cannot be applied to the inside faces of the pin, so Stainless Steel must be used where full corrosion resistance is required.



+44 (0)1246 455500



+44 (0)1246 455522

ondrives



sales@ondrives.com



www.ondrives.com

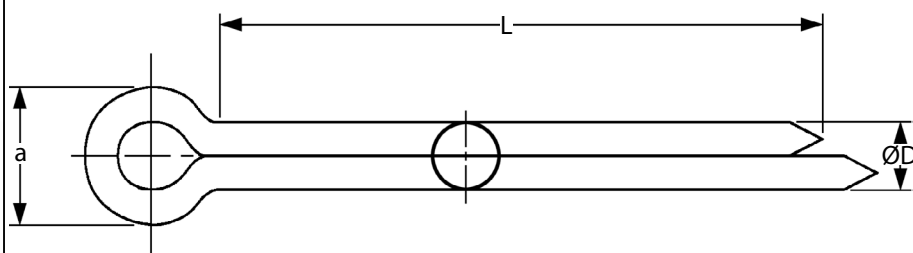
Product information updated August 2017 and subject to change. Please click the product links for prices and availability.

**SCP
SCPS**

MECHANICAL

Split Cotter Pins

DIN 94 (ISO 1234, BS 1574) : To Suit 2.5 - 4mm Dia. Holes



Part Number		To Suit Hole Dia.	Length L	Min. ØD	Max. ØD	Min. a	Max. a
Steel	Stainless						
SCP2.5-10	SCPS2.5-10	2.5	10	2.1	2.3	4.0	4.6
SCP2.5-12	SCPS2.5-12	2.5	12	2.1	2.3	4.0	4.6
SCP2.5-16	SCPS2.5-16	2.5	16	2.1	2.3	4.0	4.6
SCP2.5-18	SCPS2.5-18	2.5	18	2.1	2.3	4.0	4.6
SCP2.5-20	SCPS2.5-20	2.5	20	2.1	2.3	4.0	4.6
SCP2.5-22	SCPS2.5-22	2.5	22	2.1	2.3	4.0	4.6
SCP2.5-25	SCPS2.5-25	2.5	25	2.1	2.3	4.0	4.6
SCP2.5-28	SCPS2.5-28	2.5	28	2.1	2.3	4.0	4.6
SCP2.5-32	SCPS2.5-32	2.5	32	2.1	2.3	4.0	4.6
SCP2.5-36	SCPS2.5-36	2.5	36	2.1	2.3	4.0	4.6
SCP2.5-40	SCPS2.5-40	2.5	40	2.1	2.3	4.0	4.6
SCP2.5-45	SCPS2.5-45	2.5	45	2.1	2.3	4.0	4.6
SCP2.5-50	SCPS2.5-50	2.5	50	2.1	2.3	4.0	4.6
SCP2.5-56	SCPS2.5-56	2.5	56	2.1	2.3	4.0	4.6
SCP2.5-63	SCPS2.5-63	2.5	63	2.1	2.3	4.0	4.6
SCP2.5-71	SCPS2.5-71	2.5	71	2.1	2.3	4.0	4.6
SCP3.2-16	SCPS3.2-16	3.2	16	2.7	2.9	5.1	5.8
SCP3.2-18	SCPS3.2-18	3.2	18	2.7	2.9	5.1	5.8
SCP3.2-20	SCPS3.2-20	3.2	20	2.7	2.9	5.1	5.8
SCP3.2-22	SCPS3.2-22	3.2	22	2.7	2.9	5.1	5.8
SCP3.2-25	SCPS3.2-25	3.2	25	2.7	2.9	5.1	5.8
SCP3.2-28	SCPS3.2-28	3.2	28	2.7	2.9	5.1	5.8
SCP3.2-32	SCPS3.2-32	3.2	32	2.7	2.9	5.1	5.8
SCP3.2-36	SCPS3.2-36	3.2	36	2.7	2.9	5.1	5.8
SCP3.2-40	SCPS3.2-40	3.2	40	2.7	2.9	5.1	5.8
SCP3.2-45	SCPS3.2-45	3.2	45	2.7	2.9	5.1	5.8
SCP3.2-50	SCPS3.2-50	3.2	50	2.7	2.9	5.1	5.8
SCP3.2-56	SCPS3.2-56	3.2	56	2.7	2.9	5.1	5.8
SCP3.2-63	SCPS3.2-63	3.2	63	2.7	2.9	5.1	5.8
SCP3.2-71	SCPS3.2-71	3.2	71	2.7	2.9	5.1	5.8
SCP4.0-16	SCPS4.0-16	4.0	16	3.5	3.7	6.5	7.4
SCP4.0-18	SCPS4.0-18	4.0	18	3.5	3.7	6.5	7.4
SCP4.0-20	SCPS4.0-20	4.0	20	3.5	3.7	6.5	7.4
SCP4.0-22	SCPS4.0-22	4.0	22	3.5	3.7	6.5	7.4
SCP4.0-25	SCPS4.0-25	4.0	25	3.5	3.7	6.5	7.4
SCP4.0-28	SCPS4.0-28	4.0	28	3.5	3.7	6.5	7.4
SCP4.0-32	SCPS4.0-32	4.0	32	3.5	3.7	6.5	7.4
SCP4.0-36	SCPS4.0-36	4.0	36	3.5	3.7	6.5	7.4
SCP4.0-40	SCPS4.0-40	4.0	40	3.5	3.7	6.5	7.4
SCP4.0-45	SCPS4.0-45	4.0	45	3.5	3.7	6.5	7.4
SCP4.0-50	SCPS4.0-50	4.0	50	3.5	3.7	6.5	7.4
SCP4.0-56	SCPS4.0-56	4.0	56	3.5	3.7	6.5	7.4
SCP4.0-63	SCPS4.0-63	4.0	63	3.5	3.7	6.5	7.4
SCP4.0-71	SCPS4.0-71	4.0	71	3.5	3.7	6.5	7.4

Material

SCP Type: Mild Steel (usually Zinc plated).

SCPS Type: A4 Stainless Steel.

Cotter pins are made to DIN94, equivalent to ISO1234 and BS1574.

Also available in Brass (up to 6.3mm dias.), P.O.A.

Other Info.

Zinc plating cannot be applied to the inside faces of the pin, so Stainless Steel must be used where full corrosion resistance is required.



+44 (0)1246 455500



+44 (0)1246 455522

ondrives



sales@ondrives.com



www.ondrives.com

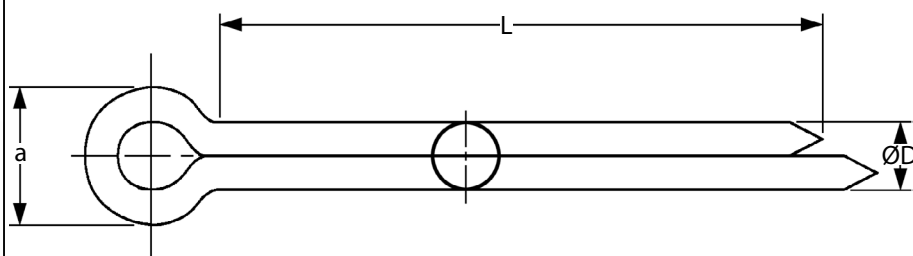
Product information updated August 2017 and subject to change. Please click the product links for prices and availability.

**SCP
SCPS**

MECHANICAL

Split Cotter Pins

DIN 94 (ISO 1234, BS 1574) : To Suit 4 - 6.3mm Dia. Holes



Part Number		To Suit Hole Dia.	Length L	Min. ØD	Max. ØD	Min. a	Max. a
Steel	Stainless						
SCP4.0-80	SCPS4.0-80	4.0	80	3.5	3.7	6.5	7.4
SCP4.0-90	SCPS4.0-90	4.0	90	3.5	3.7	6.5	7.4
SCP4.0-100	SCPS4.0-100	4.0	100	3.5	3.7	6.5	7.4
SCP4.0-112	SCPS4.0-112	4.0	112	3.5	3.7	6.5	7.4
SCP4.0-125	SCPS4.0-125	4.0	125	3.5	3.7	6.5	7.4
SCP5.0-16	SCPS5.0-16	5.0	16	4.4	4.6	8.0	9.2
SCP5.0-18	SCPS5.0-18	5.0	18	4.4	4.6	8.0	9.2
SCP5.0-20	SCPS5.0-20	5.0	20	4.4	4.6	8.0	9.2
SCP5.0-22	SCPS5.0-22	5.0	22	4.4	4.6	8.0	9.2
SCP5.0-25	SCPS5.0-25	5.0	25	4.4	4.6	8.0	9.2
SCP5.0-28	SCPS5.0-28	5.0	28	4.4	4.6	8.0	9.2
SCP5.0-32	SCPS5.0-32	5.0	32	4.4	4.6	8.0	9.2
SCP5.0-36	SCPS5.0-36	5.0	36	4.4	4.6	8.0	9.2
SCP5.0-40	SCPS5.0-40	5.0	40	4.4	4.6	8.0	9.2
SCP5.0-45	SCPS5.0-45	5.0	45	4.4	4.6	8.0	9.2
SCP5.0-50	SCPS5.0-50	5.0	50	4.4	4.6	8.0	9.2
SCP5.0-56	SCPS5.0-56	5.0	56	4.4	4.6	8.0	9.2
SCP5.0-63	SCPS5.0-63	5.0	63	4.4	4.6	8.0	9.2
SCP5.0-71	SCPS5.0-71	5.0	71	4.4	4.6	8.0	9.2
SCP5.0-80	SCPS5.0-80	5.0	80	4.4	4.6	8.0	9.2
SCP5.0-90	SCPS5.0-90	5.0	90	4.4	4.6	8.0	9.2
SCP5.0-100	SCPS5.0-100	5.0	100	4.4	4.6	8.0	9.2
SCP5.0-112	SCPS5.0-112	5.0	112	4.4	4.6	8.0	9.2
SCP5.0-125	SCPS5.0-125	5.0	125	4.4	4.6	8.0	9.2
SCP6.3-20	SCPS6.3-20	6.3	20	5.7	5.9	10.3	11.8
SCP6.3-22	SCPS6.3-22	6.3	22	5.7	5.9	10.3	11.8
SCP6.3-25	SCPS6.3-25	6.3	25	5.7	5.9	10.3	11.8
SCP6.3-28	SCPS6.3-28	6.3	28	5.7	5.9	10.3	11.8
SCP6.3-32	SCPS6.3-32	6.3	32	5.7	5.9	10.3	11.8
SCP6.3-36	SCPS6.3-36	6.3	36	5.7	5.9	10.3	11.8
SCP6.3-40	SCPS6.3-40	6.3	40	5.7	5.9	10.3	11.8
SCP6.3-45	SCPS6.3-45	6.3	45	5.7	5.9	10.3	11.8
SCP6.3-50	SCPS6.3-50	6.3	50	5.7	5.9	10.3	11.8
SCP6.3-56	SCPS6.3-56	6.3	56	5.7	5.9	10.3	11.8
SCP6.3-63	SCPS6.3-63	6.3	63	5.7	5.9	10.3	11.8
SCP6.3-71	SCPS6.3-71	6.3	71	5.7	5.9	10.3	11.8
SCP6.3-80	SCPS6.3-80	6.3	80	5.7	5.9	10.3	11.8
SCP6.3-90	SCPS6.3-90	6.3	90	5.7	5.9	10.3	11.8
SCP6.3-100	SCPS6.3-100	6.3	100	5.7	5.9	10.3	11.8
SCP6.3-112	SCPS6.3-112	6.3	112	5.7	5.9	10.3	11.8
SCP6.3-125	SCPS6.3-125	6.3	125	5.7	5.9	10.3	11.8
SCP6.3-140	SCPS6.3-140	6.3	140	5.7	5.9	10.3	11.8

Material

SCP Type: Mild Steel (usually Zinc plated).

SCPS Type: A4 Stainless Steel.

Cotter pins are made to DIN94, equivalent to ISO1234 and BS1574.

Also available in Brass (up to 6.3mm dias.), P.O.A.

Other Info.

Zinc plating cannot be applied to the inside faces of the pin, so Stainless Steel must be used where full corrosion resistance is required.



+44 (0)1246 455500



+44 (0)1246 455522

ondrives



sales@ondrives.com



www.ondrives.com

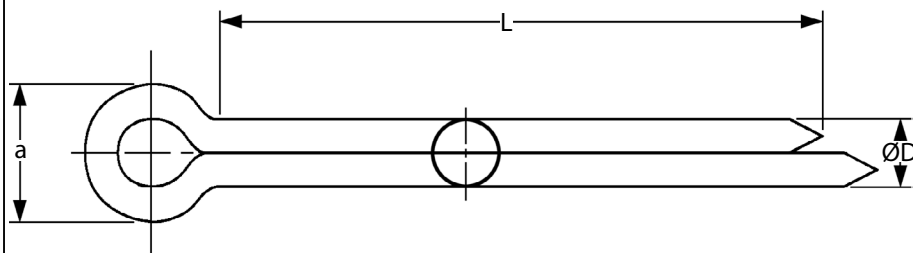
Product information updated August 2017 and subject to change. Please click the product links for prices and availability.

**SCP
SCPS**

MECHANICAL

Split Cotter Pins

DIN 94 (ISO 1234, BS 1574) : To Suit 8 - 12mm Dia. Holes



Part Number Steel	To Suit Hole Dia.	Length L	Min. ØD	Max. ØD	Min. a	Max. a
SCP8.0-32	8	32	7.3	7.5	13.1	15.0
SCP8.0-36	8	36	7.3	7.5	13.1	15.0
SCP8.0-40	8	40	7.3	7.5	13.1	15.0
SCP8.0-45	8	45	7.3	7.5	13.1	15.0
SCP8.0-50	8	50	7.3	7.5	13.1	15.0
SCP8.0-56	8	56	7.3	7.5	13.1	15.0
SCP8.0-63	8	63	7.3	7.5	13.1	15.0
SCP8.0-71	8	71	7.3	7.5	13.1	15.0
SCP8.0-80	8	80	7.3	7.5	13.1	15.0
SCP8.0-90	8	90	7.3	7.5	13.1	15.0
SCP8.0-100	8	100	7.3	7.5	13.1	15.0
SCP8.0-112	8	112	7.3	7.5	13.1	15.0
SCP8.0-125	8	125	7.3	7.5	13.1	15.0
SCP8.0-140	8	140	7.3	7.5	13.1	15.0
SCP8.0-160	8	160	7.3	7.5	13.1	15.0
SCP10.0-32	10	32	9.3	9.5	16.6	19.0
SCP10.0-36	10	36	9.3	9.5	16.6	19.0
SCP10.0-40	10	40	9.3	9.5	16.6	19.0
SCP10.0-45	10	45	9.3	9.5	16.6	19.0
SCP10.0-50	10	50	9.3	9.5	16.6	19.0
SCP10.0-56	10	56	9.3	9.5	16.6	19.0
SCP10.0-63	10	63	9.3	9.5	16.6	19.0
SCP10.0-71	10	71	9.3	9.5	16.6	19.0
SCP10.0-80	10	80	9.3	9.5	16.6	19.0
SCP10.0-90	10	90	9.3	9.5	16.6	19.0
SCP10.0-100	10	100	9.3	9.5	16.6	19.0
SCP10.0-112	10	112	9.3	9.5	16.6	19.0
SCP10.0-125	10	125	9.3	9.5	16.6	19.0
SCP10.0-140	10	140	9.3	9.5	16.6	19.0
SCP10.0-160	10	160	9.3	9.5	16.6	19.0
SCP12.0-45	13	45	12.1	12.4	21.7	24.8
SCP12.0-50	13	50	12.1	12.4	21.7	24.8
SCP12.0-56	13	56	12.1	12.4	21.7	24.8
SCP12.0-63	13	63	12.1	12.4	21.7	24.8
SCP12.0-71	13	71	12.1	12.4	21.7	24.8
SCP12.0-80	13	80	12.1	12.4	21.7	24.8
SCP12.0-90	13	90	12.1	12.4	21.7	24.8
SCP12.0-100	13	100	12.1	12.4	21.7	24.8
SCP12.0-112	13	112	12.1	12.4	21.7	24.8
SCP12.0-125	13	125	12.1	12.4	21.7	24.8
SCP12.0-140	13	140	12.1	12.4	21.7	24.8
SCP12.0-160	13	160	12.1	12.4	21.7	24.8

Material

SCP Type: Mild Steel (usually Zinc plated).
Cotter pins are made to DIN94, equivalent to ISO1234 and BS1574.
Also available in Brass (up to 6.3mm dias.), P.O.A.

Other Info.

Zinc plating cannot be applied to the inside faces of the pin so Stainless Steel must be used where full corrosion resistance is required.



+44 (0)1246 455500



+44 (0)1246 455522

ondrives



sales@ondrives.com



www.ondrives.com

Product information updated August 2017 and subject to change. Please click the product links for prices and availability.