



Take advantage of CPI's waterproof switches mounted in easy-to-install panels. Switches can be wired in series, parallel, or left as individual circuits. Panel assemblies can be terminated with a wide variety of industry standard connectors.

Use one of our standard configurations shown here, or contact us to discuss a design made to fit your application.

Shown: K1109 with mock graphics

### The Basic Switch

The internal switching mechanism for these switches is a snap-action copper sine blade spring with a riveted contact. The standard contact material is silver alloy with gold alloy and gold plated silver contacts available upon request.



**Electrical rating:** (28VDC/120VAC): 5 amps resistive, 3 amps inductive. Higher ratings available on special order. UL recognized for 120VAC/5 amp resistive rating upon request.

**Endurance:** 100,000 to 1 million cycles (depending on configuration)

**Operating temperature range:** -50°F to 221°F, depending on configuration.

**Environmental resistance:** Excellent resistance to both high and low temperatures, acids, alkalis, salt spray, sand, dust and fungus.

**Color:** Black is standard. Other colors available on special order.

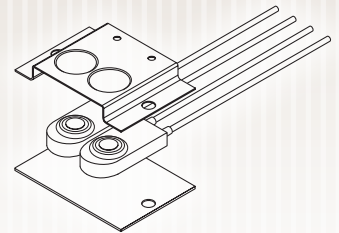
**Jacket material:** Thermoplastic rubber.

### Applications

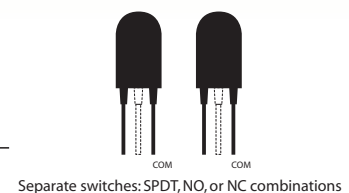
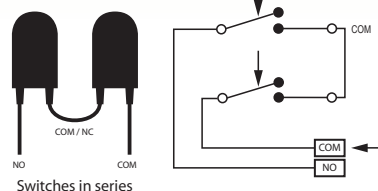
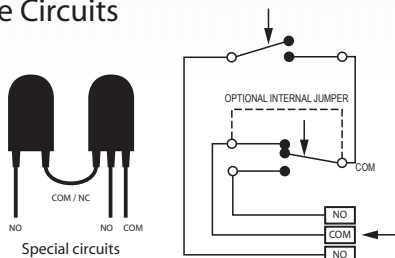
- Lift gates
- Truck APU
- Driver notification (fire trucks)
- Outrigger control
- Hitch control
- Remote RPM control (refuse trucks, fire trucks)
- Trim tabs (marine)
- Cart tipper (refuse trucks)

All panels are welded assemblies using heavy-gauge 304 stainless steel.

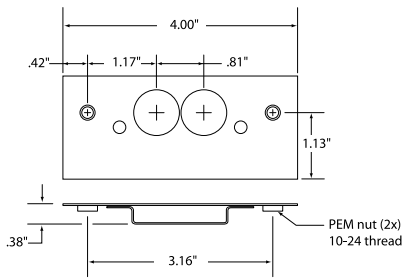
Combined with our proven B9000 Series basic switches, CPI's Waterproof Switch Panels provide a rugged and reliable control solution for harsh environments on construction, agricultural, over-the-road, and stationary industrial equipment.



### Available Circuits

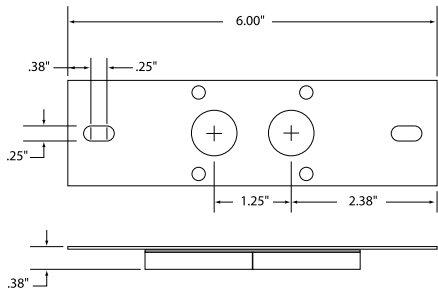


# The Family of Panel Brackets



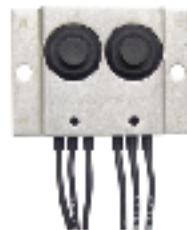
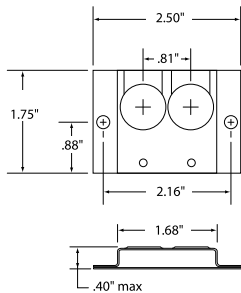
## E1333

- close button orientation
- integral PEM nut for easy installation



## K1109

- wide button orientation
- slotted mounting holes
- large area for added graphics



## E1058

- flush mount or surface mount
- compact design

## Terminations

Along with CPI's offering of standard wire and cable leads, we also have available special terminations to meet your specifications. Variations include special color-coded wire, BUNA-N, coil cords, and alternative wire gauges. Connectors, wire markers, and sleeving may also be specified, creating a complete switch/harness assembly.

The main advantage is that you will receive a complete assembly from CPI rather than a third-party harness house. In addition, you will receive the highest quality possible, as CPI is your most qualified source when it comes to integrating terminations with our sealed switches.



## Button Heights

Our switches are available in low, medium, and high button configurations as shown below.

